



NORTH FLORIDA COMMUNITY COLLEGE

**2014-2015 Fact Book**

2014-2015 Fact Book





# NFCC

## *Preface*







# NORTH FLORIDA COMMUNITY COLLEGE

## 2014-2015 Fact Book

325 NW TURNER DAVIS DRIVE  
MADISON, FL 32340  
850-973-2288  
[www.nfcc.edu](http://www.nfcc.edu)

### *President*

John Grosskopf  
[GrosskopfJ@nfcc.edu](mailto:GrosskopfJ@nfcc.edu)  
Phone 850-973-1601  
Fax 850-973-1602

### *Office of Institutional Effectiveness, Research, and Accreditation*

Susan Taylor  
[TaylorS@nfcc.edu](mailto:TaylorS@nfcc.edu)  
Phone 850-973-1679  
Fax 850-973-1684

Cheri Green  
[GreenC@nfcc.edu](mailto:GreenC@nfcc.edu)  
Phone 850-973-1678  
Fax 850-973-1684

### *2014-2015 Board of Trustees*

Michael R. Williams, Chair, Madison County  
Ricky N. Lyons, Vice Chair, Lafayette County  
Ann "Sharon" Benoit, Madison County  
Dr. Bill Brothers, Suwannee County  
Dawn Gunter, Taylor County  
Brantly Helvenston, Suwannee County  
David Howell, Hamilton County  
William "Billy" Washington, Madison County  
Lloyd "Gary" Wright, Jefferson County

## Purpose

The 2014-2015 North Florida Community College Fact Book provides information about NFCC and includes student, financial, and personnel data. The Office of Institutional Effectiveness, Research, and Accreditation has made every effort to ensure delivery of timely and accurate information. We hope you will use this publication on a continual basis. We welcome feedback and suggestions, and our measure of success is the degree to which people find this publication informative and useful.

Data has been compiled from IPEDS, State Accountability Reports, FLDOE Articulation Reports, U.S. Census Bureau, internal databases, and external higher education and economic websites. Data included from sources other than NFCC's internal databases are cited within this document underneath the relevant data/charts.

Every effort has been made to portray an accurate snapshot of North Florida Community College. However, if you have any questions or concerns about the facts and/or data within this document, please contact NFCC's Office of Institutional Effectiveness, Research, and Accreditation.

North Florida Community College is dedicated to the concept of equal opportunity and access. In accordance with Federal and State laws, and College policy, NFCC does not discriminate in any of its policies, procedures, or practices on the basis of age, color, sex, religion, national origin, race, creed, marital status, genetic information, or physical/mental disability. Inquiries regarding equity issues of any nature may be directed to Denise Bell, Equity Coordinator, 325 NW Turner Davis Drive, Madison, Florida 32340, call 850-973-9481 or email [BellD@nfcc.edu](mailto:BellD@nfcc.edu).



## **Vision**

To be our communities' first choice for education and cultural enrichment.

## **Mission**

An exceptional college dedicated to an individualized and supportive academic atmosphere, accessible education, lifelong learning opportunities, and professional growth for our students and communities.

## **Values**

Positive Attitude | Accountability | Commitment | Excellence | Respect

# 2012-2017 Strategic Plan

(Amended August 2014) North Florida Community College is committed to excellence in teaching and learning and has identified the following institutional values upon which to base these efforts:

- **Positive Attitude** – approach situations in an optimistic manner.
- **Accountability** – demonstrate quality standards are being upheld.
- **Commitment** – promise to provide the best service to our students and community.
- **Excellence** – adhere to the highest standards of teaching, learning, and professionalism.
- **Respect** – treat all individuals with fairness and dignity.

## **Goal #1: Increase Student Success:**

**Educate students for personal and professional opportunities.**

- **Objective 1.** Offer competent classroom instruction
  - a) Provide technical and transfer programs that include distinct general education competencies and offer these programs through a variety of course delivery modes.
  - b) Provide access to educational and career technical programs that prepare students for lifelong learning and employment through the development of adaptable skills and knowledge.
- **Objective 2.** Offer appropriate academic support
  - a) Provide comprehensive student and academic support services to college-ready students that help them meet their career, academic, and personal goals.
  - b) Provide access and opportunity for students who are underprepared or who demonstrate academic need for college-level work through developmental education and academic support to prepare students for collegiate studies, and to promote student learning and success through various course delivery modes in credit and noncredit courses.

## **Goal #2: Improve performance accountability:**

**Create and maintain a sustainable and data-driven decision-making campus environment.**

- **Objective 1.** Complete comprehensive program reviews. (Comprehensive Program Reviews)
  - a) Conduct comprehensive program reviews for all academic and non-academic departments.
  - b) Analyze student learning outcome assessment data and document continual improvement of instruction.
  - c) Conduct market surveys to ensure program offerings meet the educational needs of our students and district.
- **Objective 2.** Strengthen employee development. (Employee Development)
  - a) Provide leadership, development opportunities, and resources for staff and faculty to work effectively.
  - b) Align campus committee and work team assignments with identified employee interests and strengths.
  - c) Analyze predicted employment changes and develop a succession plan.
  - d) Develop an alluring employee recruitment package.
  - e) Create and implement a comprehensive employee orientation.

## **Goal #3: Strengthen communication:**

**Strengthen information sharing procedures at North Florida Community College.**

- **Objective 1.** Design and implement a plan to ensure information is effectively shared. (Campus Communication)
  - a) Create and implement a protocol to ensure internal and external communication.



- b) Identify and improve procedures and/or process to address employee concerns.
- **Objective 2.** Align institutional policies with comprehensive procedures. (Policies and Procedures)
  - a) Review all existing institutional policies for consistency.
  - b) Identify and develop procedures for each policy.
  - c) Develop operations manuals for department activities.
- **Objective 3.** Ensure students, faculty, and staff are knowledgeable about safety procedures on campus. (Safety)
  - a) Provide training to share the safety procedures and available resources.
  - b) Conduct drills to practice the safety procedures.
- **Objective 4.** Create a comprehensive campaign to brand the NFCC image. (Image)
  - a) Capture and publish stories about the impact of NFCC on students, alumni, employees, and the district.
  - b) Evaluate the mission and vision to ensure they reflect institutional values.

#### **Goal #4: Increase resource acquisition and allocation:**

**Ensure campus funding acquisition, expenditures, and resource allocation are aligned with strategic plan.**

- **Objective 1.** Increase funding and implement transparency related to financial resources. (Financial Resources)
  - a) Increase external funding through grants, donors, endowments, alumni, and other resources.
  - b) Implement a transparent process for budget planning and disbursement of funds.
  - c) Review foundation policies and procedures to best provide financial support to the widest range of students.
  - d) Promote self-sufficiency for auxiliary enterprises on campus.
- **Objective 2.** Create and implement a comprehensive technology plan. (Technology)
  - a) Evaluate technology needs of students and employees.
  - b) Analyze and plan for future technology needs of students and employees.
  - c) Align technology purchase decisions with identifiable needs of students and employees.
- **Objective 3.** Create and implement a campus efficiency plan. (Sustainability)
  - a) Increase awareness of sustainability through professional development workshops.
  - b) Ensure all departments on campus include a sustainability goal in their institutional effectiveness plans.

#### **Goal #5: Provide a holistic campus experience:**

**Provide a holistic campus experience for students, faculty, and staff.**

- **Objective 1.** Develop an intentional and seamless recruitment, advising, and retention system. (Advising and Retention)
  - a) Analyze the existing advising, recruitment, and retention activities on campus and align them into a seamless delivery of services.
  - b) Create a one-stop center for advising, recruitment, and retention.
  - c) Analyze the scheduling needs of students, including time and location based on all student types.
  - d) Increase graduation rates.
- **Objective 2.** Assess campus enrichment and support resources. (Resources)
  - a) Conduct satisfaction, usage, and needs surveys.
  - b) Integrate services to reflect optimal utilization and creativity.

# Table of Contents

Preface.....	II
Purpose .....	IV
Vision.....	VI
Mission .....	VI
Values.....	VI
2012-2017 Strategic Plan .....	VII
College Profile.....	1
Campus Location.....	3
Website.....	3
Established .....	3
Accreditation .....	3
Type of Institution .....	3
Degrees Offered in the 2014-2015 Term.....	3
Other Awards.....	4
Tuition.....	6
Financial Aid .....	7
History .....	9
NFCC Offerings .....	10
Memberships .....	10
Location .....	11
The Campus .....	11
Campus Life .....	17
Student Clubs and Organizations.....	19
Community Theatre .....	19
Performing Artist Series .....	19
Community Education .....	20
Education to Go (ed2go) Online Non-Credit Classes.....	20
Campus Security .....	21
The Student Population.....	23
Total Student Headcount .....	25
Enrollment by Program .....	26
County Enrollment by Term .....	28
5 Year County Enrollment.....	29
District High School Graduates Enrolled .....	32
Enrollment by Gender.....	33
Enrollment by Age .....	34
Enrollment by Ethnicity .....	35
Enrollment Schedule by Day and Time .....	38
Instructor to Student Ratio .....	40
Average Class Size.....	40
Student Success .....	41
Degrees Awarded .....	43
Graduates by Program.....	44
First Time in College Retention & Success .....	44
College Preparatory Retention & Success .....	46
Vocational Placement .....	47
Economic Success Measures .....	48
NFCC Transfer Success .....	50
Top Universities Receiving NFCC Graduates .....	50
Grade Distribution.....	51
Distance Learning .....	53
Number of Online Courses.....	55

Number of Online Students.....	55
Online Student Demographics .....	56
Dual Enrollment.....	57
Number and Cost of Dual Enrolled Student .....	59
Financial Aid.....	65
Number of Financial Aid Awards.....	67
Dollar Amount of Financial Aid Awards .....	67
Distribution by County.....	67
Awards by County.....	68
The Library .....	71
Collections .....	73
Circulation Statistics.....	73
Interlibrary Loan Statistics.....	74
Orientation Sessions.....	74
The Foundation .....	75
Scholarships Awarded .....	77
Foundation Assets` .....	77
Faculty and Staff .....	79
Full-Time Faculty .....	81
Full-Time Staff .....	82
Full-Time Faculty and Staff .....	83
Finances.....	85
General Fund Budget.....	87
General Fund Expenditures .....	88
Percent Distribution of Core Revenues.....	89
Core Revenues per FTE Enrollment.....	89
Percent Distribution of Core Expenses .....	90
Core Expenses per FTE Enrollment .....	90
The District.....	91
Hamilton County .....	93
Jefferson County.....	94
Lafayette County.....	95
Madison County.....	96
Suwannee County .....	97
Taylor County .....	98
Economic Impact.....	99
Perspective.....	102
Student Perspective.....	103
Taxpayer Perspective .....	103
Taxpayer Perspective .....	104
College Rankings .....	105
Washington Monthly 2013 Community College Rankings .....	107
Glossary of Terms .....	109
Glossary of Terms .....	111
Campus Directory.....	113
Campus Directory .....	115
Campus Map .....	118





# NFCC

## *College Profile*





## Campus Location

325 NW Turner Davis Drive  
Madison, Florida 32340

## Website

[www.nfcc.edu](http://www.nfcc.edu)

## Established

1958



## Accreditation

North Florida Community College is accredited by the Southern Association of Colleges and Schools Commission on Colleges to award associate in arts degrees, associate in science degrees and career and technical certificates. Contact the Commission on Colleges at 1866 Southern Lane, Decatur, Georgia 30033-4097 or call 404-679-4500 for questions about the accreditation of North Florida Community College.

## Type of Institution

Public

## Degrees Offered in the 2014-2015 Term

Associate in Arts Degree Program	Semester Credit Hours
Associate in Arts	60
Associate in Arts: Business Emphasis	60
Associate in Arts: Education Emphasis	60
Associate in Arts: Nursing Emphasis	60
Associate in Science Degree Program	Semester Credit Hours
Associate in Science: Business Administration	60
Associate in Science: Criminal Justice Technology	64
Associate in Science: Digital Media/Multimedia Technology	64
Associate in Science: Early Childhood Education	63
Associate in Science: Emergency Medical Services	73
Associate in Science: LPN-RN Bridge	72
Associate in Science: Nursing - RN	72

## Other Awards

College Credit Certificates	Semester Credit Hours
Business Development and Entrepreneurship	25
Business Operations: Accounting/Budgeting	18
Business Operations: Management	18
Business Operations: Small Business Management	18
Child Care Center Management Specialization	12
Digital Media/Multimedia Authoring	12
Digital Media/Multimedia Instructional Technology	15
Digital Media/Multimedia Production	15
Digital Media/Multimedia Web Production	15
Human Resources Administrator	21
Network Security	30
Paramedic	42
Preschool Specialization	12

## Career Technical Certificates

## Clock Hours

Administrative Office Specialist	1050
Automation and Production Technology	600
Child Care Center Operations	45
Correctional Officer Basic Recruit	420
Corrections and Law Enforcement Basic Dual Cert	935
Crossover Correctional Officer to Law Enforcement	515
Crossover Law Enforcement to Correctional Officer	172
Early Childhood Professional	600
Firefighter	206
Law Enforcement Recruit	770
Medical Administrative Specialist	1050
Patient Care Technician	600
Pharmacy Technician	1050
Practical Nursing	1350

## Applied Technology Diploma

## Semester Credit Hours

Emergency Medical Technician	11
------------------------------	----



# Tuition

NFCC strives to keep its tuition costs low and competitive with other comparable educational institutions. Financial aid may be available to qualifying students through student loans, grants or scholarships.

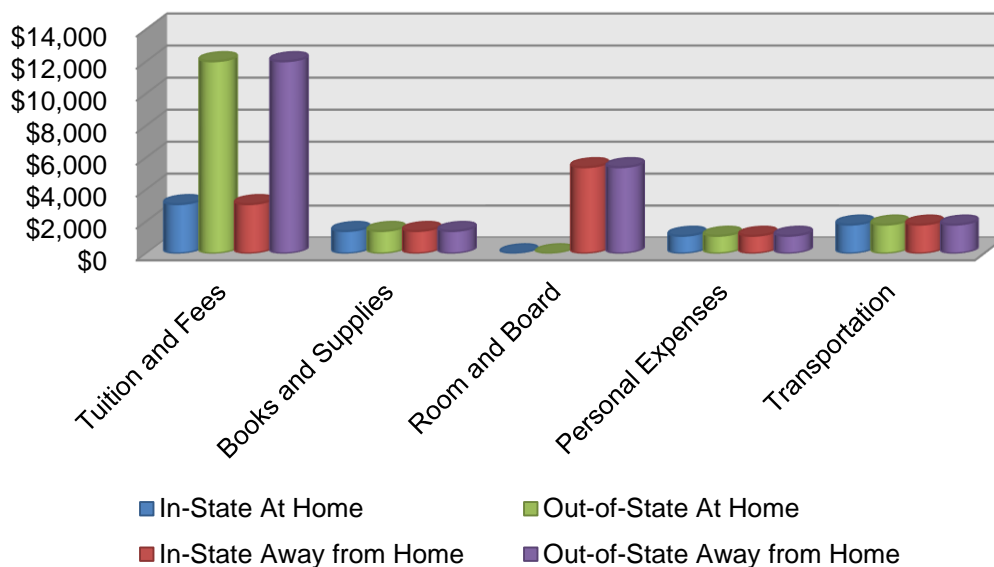
## 2014-2015 Estimated Student Budget

At Home	In-State	Out-of-State
Tuition and Fees	\$3,084	\$12,018
Books and Supplies	\$1,400	\$1,400
Room and Board	\$0	\$0
Personal Expenses	\$1,100	\$1,100
Transportation	\$1,800	\$1,800
<b>Total</b>	<b>\$7,384</b>	<b>\$16,318</b>
Away from Home	In-State	Out-of-State
Tuition and Fees	\$3,084	\$12,018
Books and Supplies	\$1,400	\$1,400
Room and Board	\$5,400	\$5,400
Personal Expenses	\$1,100	\$1,100
Transportation	\$1,800	\$1,800
<b>Total</b>	<b>\$12,784</b>	<b>\$21,718</b>

NOTE: Cost is estimated. Tuition and fees are subject to change.

Source: NFCC 2014-2015 College Catalog

## 2014-2015 Estimated Student Costs



Source: NFCC 2014-2015 College Catalog

### Typical tuition and required fees for full-time students: Academic year 2014-15

Level of student	In-state	Out-of-state
Undergraduate	\$2,994	\$11,460
Graduate		

Source: IPEDS Data Institutional Profile 2014-2015

## Financial Aid

### Student Financial Aid, 2014-15

	Percent Receiving Aid	Average Amount Aid of Received
<b>All undergraduate students</b>		
Any grant or scholarship aid	68%	\$4,566
Pell grants	56%	\$4,419
Federal student loans	0%	
<b>Full-time, first-time, degree/certificate-seeking undergraduate students</b>		
Any student financial aid	88%	
Grants or scholarship aid	88%	\$5,063
Federal grants	69%	\$4,693
Pell grants	69%	\$4,648
Other federal grants	7%	\$450
State or local grants and scholarships	51%	\$1,289
Institutional grants and scholarships	40%	\$1,451
Student loan aid	0%	
Federal student loans	0%	
Other student loans	0%	

Source: IPEDS Data Institutional Profile 2014-2015

### Average net price of attendance for full-time, first-time, degree/certificate-seeking undergraduate students who paid the in-state tuition rate and were awarded grant or scholarship aid: 2010-11 - 2012-13

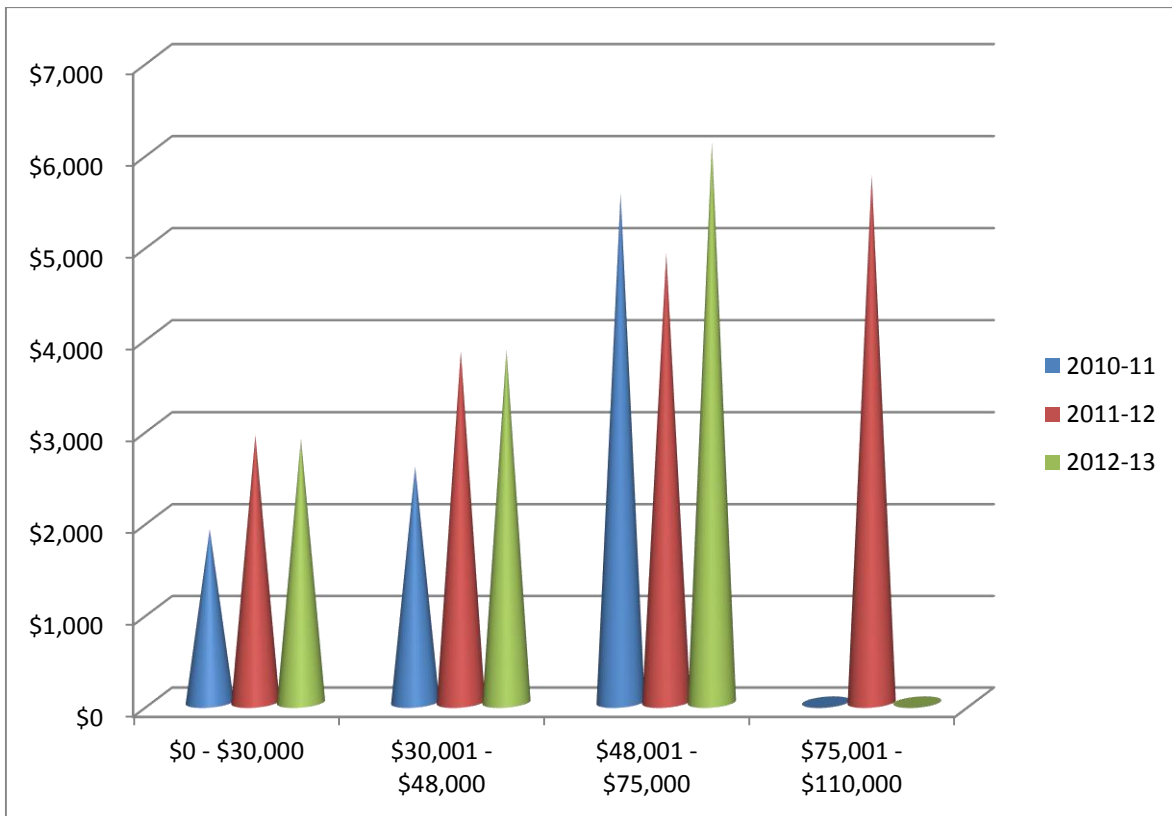


Source: IPEDS Data Institutional Profile 2014-2015

**Average net price of attendance for full-time, first-time, degree/certificate-seeking undergraduate students who paid the in-state or in-district tuition rate and were awarded Title IV aid, by income: 2010-11 - 2011-13**

Income	2010-11	2011-12	2012-13
\$0 - \$30,000	\$1,891	\$2,912	\$2,876
\$30,001 - \$48,000	\$2,572	\$3,830	\$3,845
\$48,001 - \$75,000	\$5,541	\$4,893	\$6,101
\$75,001 - \$110,000	\$0	\$5,742	\$0

Source: IPEDS Data Institutional Profile 2014-2015



Source: IPEDS Data Institutional Profile 2014-2015



# History

The Florida Legislature of 1957 authorized North Florida Junior College and five other community colleges in the state. The counties of Hamilton, Lafayette, Madison, Suwannee, and Taylor were proposed as an area with need for a community junior college. In the establishment of the college area, Jefferson County replaced Suwannee County, with Suwannee County becoming a participating county in 1974.

In March 1958, Dr. Marshall W. Hamilton was appointed president of the new institution, and temporary academic and administrative quarters were secured in Madison. In September the first NFJC classes were organized. Ground was broken in January 1959 for the first permanent buildings, the Library and the Science Building. Suwannee River Junior College was established in 1959, with Dr. James J. Gardner, founding president, serving until 1961. Mrs. Jenyethel Merritt served as president until Suwannee River Junior College merged with NFJC in 1966.

Dr. Stephen T. McMahon served as president from 1970-1978; Dr. Gary P. Sims, 1978-1984; and Dr. Robert W. Ramsay, 1984-1987. Dr. William H. McCoy assumed the presidency on Aug. 1, 1987. On April 17, 1988, a tornado damaged many campus buildings and destroyed the Van. H. Priest Auditorium and Hardee Chapel.

In July 1995, the District Board of Trustees changed the name of the College from North Florida Junior College to North Florida Community College in order to better define the purpose of the institution.

Dr. McCoy retired in 1995. On January 2, 1996, Dr. Beverly M. Grissom became president. Dr. Grissom retired in 2001. Morris G. Steen, Jr. was named president of NFCC on March 1, 2002; he served as interim president from July 2001 through February 2002 before being named NFCC's seventh president. In 2008 the college celebrated its 50th year anniversary. Steen retired in 2008. John Grosskopf was named the eighth president of NFCC on Jan. 20, 2009.



## NFCC Offerings

- Transferable college credit programs leading to the Associate in Arts Degree
- Workforce development programs leading to the Associate in Science Degree or technical certificates
- for occupational skills and employment
- Access to baccalaureate degree programs through partnerships with colleges and universities
- Personal, professional and academic development opportunities through credit and non-credit programs
- Partnerships with business, industry, government and other institutions to promote economic development and provide retraining opportunities for the district's workforce
- Support services to assist students in making educational, vocational and personal decisions
- Cultural, recreational and enrichment opportunities for students and residents of the community

## Memberships

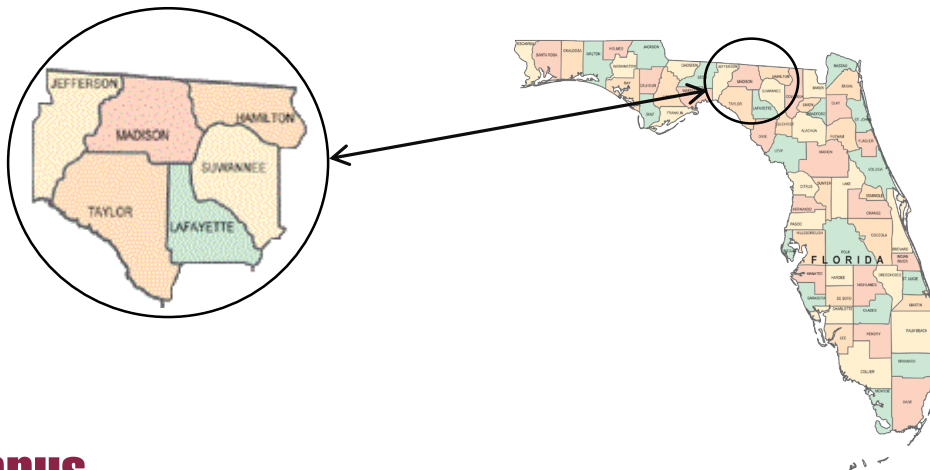
- American Association of Community Colleges
- Association of Florida Colleges
- Council for Higher Education Accreditation
- Florida Association of Colleges and Universities
- Florida Association of Collegiate Registrars and Admissions Officers
- Florida Association of Financial Aid Administration
- Florida Association of Veterans Education Specialization
- Florida Developmental Education Association
- Hamilton County Chamber of Commerce
- Lafayette County Chamber of Commerce
- Madison County Chamber of Commerce & Tourism
- Monticello-Jefferson County Chamber of Commerce
- National Association of College and University Business Officers
- National Council for Marketing and Public Relations
- Northeast Florida Education Consortium
- Southern Association of Colleges and Schools Commission on Colleges
- Suwannee County Chamber of Commerce
- Taylor County-Perry Chamber of Commerce
- The Florida College System



## Location

NFCC is located in Madison, Florida at 325 NW Turner Davis Drive. Madison lies in the center of NFCC's six county service area (Hamilton, Jefferson, Lafayette, Madison, Suwannee, and Taylor Counties), off of I-10 near I-75, and is near such major Florida cities as Tallahassee and Jacksonville. NFCC is also just minutes away from the Georgia border and is a short distance from the Gulf of Mexico and cities bordering the Atlantic Ocean.

The City of Madison has a population of just over 3000; Madison County's total population is close to 20,000; and NFCC's six-county service area has a combined population of over 115,000 (figures based on data from the US Census Bureau website <http://quickfacts.census.gov/qfd/index.html>).



## The Campus

Within walking distance of downtown Madison, the NFCC campus is situated on 165 acres of naturally beautiful property. The campus features a 20-acre outdoor environmental center, a 580-seat auditorium, a newly renovated fitness and wellness center, one of the best college libraries in the state, and a state-of-the-art science learning center and public safety training facility.

Madison's natural beauty, small town hospitality and proximity to larger cities make NFCC a wonderful place to learn.





## Major NFCC Buildings

- Marshall W. Hamilton Library (1959, 1998)
- Developmental Education/Mathematics Classrooms (1959, 2008)
- Business Education Building (1961)
- Student Center (1962)
- Walter L. Bishop Administration Building (1963)
- Colin P. Kelly Fitness Center (1965, 2010)
- Fine Arts Building (1965)
- Testing Center (1965)
- General Classroom Building (1966)
- Maintenance Building (1967)
- Technology Center (1967, 2008)
- Career and Technical Education Center (1967)
- Administrative Services Center (1967)
- Van H. Priest Auditorium (1969, 1991)
- Hardee Center for the Arts (1993, 2009)
- Morris G. Steen, Jr. Science Learning Center (2007)
- Public Safety Academy Building (2008)



## Other Named Buildings and Facilities



The Norman O. and Leone N. Protsman Bell Tower erected in 1992.

The Frank Cantey Softball Field dedicated in 1999.

The original Hardee Chapel was built in 1973 and dedicated to Mrs. Claire Hardee Parramore. It, along with several other buildings including Van H. Priest Auditorium, was destroyed by a tornado which swept the campus in 1988. The Hardee Center was built to replace the Hardee Chapel in 1993 and remodeled into the Hardee Center for the Arts in 2009.

The Developmental Education/Mathematics Classrooms Building, built in 1959, was originally named the A.J. Hargrove Science Building. It was renovated and renamed in 2008.

The Florida Collection, housed in the Marshall W. Hamilton Library was dedicated to the memory of Joe Akerman, professor of history at NFCC from 1965 - 2009. A memorial plaque was unveiled and the collection renamed the Joseph Alexander Akerman, Jr. Florida Collection on April 21st, 2013.

## Bacot Art Gallery

The Bacot Art Gallery at NFCC was inaugurated in the autumn of 1975 and has been in continuous operation since that date. On March 3, 2006 a memorial plaque honoring the late Jules deRomand Bacot, professor of art and humanities at NFCC from 1969-1983, was unveiled and remains on display in the gallery. The Bacot Gallery is located in the Student Center, Bldg. 9.

## Hardee Center for the Arts

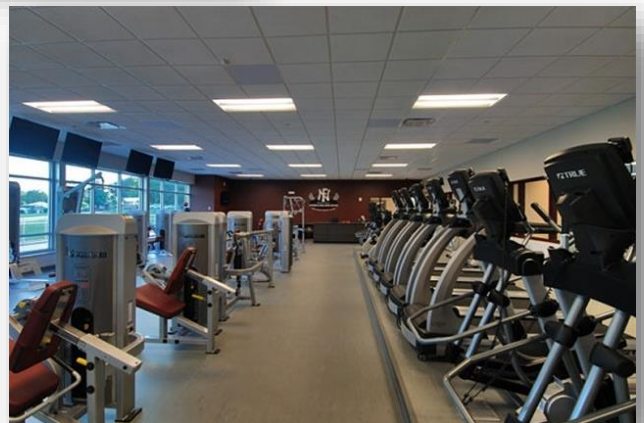
In September 2009, the Hardee Center for the Arts opened in Bldg. 11. The Hardee Center for the Arts shows monthly exhibits of national and local artists. The Gallery is open Monday-Thursday, 10 a.m.-4 p.m.

Information on current or upcoming exhibits is available from the NFCC Art Department, (850) 973-1642, or online at [www.nfcc.edu/departments/academics/visual-arts](http://www.nfcc.edu/departments/academics/visual-arts).

## Colin P. Kelly Fitness Center

The Colin P. Kelly Fitness Center (Bldg. 12) is NFCC's new, state-of-the-art fitness facility. The fitness room is fully loaded with cutting edge cardio and resistance training equipment. From resistance training machines, to free weights, basketball or volleyball, there is something for everyone looking to get active and stay healthy. The building also features multi-purpose rooms that accommodate activities such as yoga, fitness and aerobic classes, meetings and special events. The building was originally built in 1965 as the Colin P. Kelly Gymnasium. In 2010, renovations were completed and the building was renamed the Colin P. Kelly Fitness Center. A half-mile, outdoor walking track was also added to the campus during the renovations. The fitness center is open to current NFCC students. The Fitness Walking Trail is open to the public.

More information and operation hours are available at [www.nfcc.edu/fitness-and-wellness-center](http://www.nfcc.edu/fitness-and-wellness-center) or call (850) 973-1651.





## Ladell Brothers Outdoor Environmental Center



The Ladell Brothers Outdoor Environmental Center was conceived in the fall of 1972 and gradually became a reality through state grants, local donations, and the hard work and dedication of the North Florida Community College faculty and student body. The nature center's main entrance, located on the northwest part of the campus, leads to the picnic area, which is the beginning and end of a series of nature trail loops.

Habitats included along the trails are stream, lake, swamp, mixed hardwood forest, agricultural field, and campus grasslands. The main purpose of the center is to serve as an outdoor classroom for the pursuit of environmental education. NFCC's surrounding school districts often use the center as an environmental study area. The Ladell Brothers Outdoor Environmental Center is also available for recreational uses and was named an official site for the Great Florida Birding Trail in 2003. Binoculars may be borrowed from the Morris G. Steen, Jr. Science Learning Center (Building 34).

Information about the nature center is available from the NFCC Science Department, (850) 973-1645, or online at [www.nfcc.edu/communityprograms/nature-center](http://www.nfcc.edu/communityprograms/nature-center).





## Marshall W. Hamilton Library

The Marshall W. Hamilton Library at NFCC (Bldg. 4) offers a wealth of resources necessary for support of student learning both on site and at a distance. The Library features wireless Internet access indoors and out. Online resources consist of a catalog, full-text periodical databases and electronic books, email reference, and electronic renewal of library materials.

The Library provides comfortable and attractive surroundings for use of collections and encourages casual reading and browsing as well as serious research. Tables and small group areas offer various study settings and convenient access to collections. Thirty-nine computers allow students access to the Internet, email and the Microsoft Office suite of programs. A classroom houses full presentation equipment and a computer lab. The conference room offers comfortable seating where students can take advantage of a quiet study space or reserve it for larger study groups and meetings. Here students can also view DVDs or use the listening area for music CDs.

The library collections include 33,000 print books, 30,000 electronic books, over 100 electronic databases, 24 periodical subscriptions, and over 800 DVDs. The library website ([www.nfcc.edu/library](http://www.nfcc.edu/library)) provides an information portal for access to the library catalog, full-text databases, electronic books and library information. Professional librarians are willing to assist students with any research questions or help with library resources.



## Van H. Priest Auditorium



The original Van H. Priest Community Center was erected in 1969 and dedicated in 1976. The Center was destroyed by a tornado in 1988. In 1991 a new center was “rebuilt to serve the people of Hamilton, Jefferson, Lafayette, Madison, Suwannee and Taylor Counties” and named Van H. Priest Auditorium.

Van H. Priest Auditorium (VHP) is home to NFCC graduation ceremonies, performances of the NFCC Artist Series and NFCC Community Theater, various other college activities and is rented for a variety of community events throughout the year. VHP seats 580 and has a performing stage with light and sound technical capabilities under the direction of experienced technical personnel. The Auditorium also has a lobby, ticket area, dressing rooms and loading dock.

The NFCC Artist Series presented its first program in 1959. Since that time it has continued to grow and bring excellent performing arts and arts education events to the community. Performances range from classical to contemporary and over the years, thousands have enjoyed shows as varied as classical concerts, big band sounds, ballet, jazz and blues, country and rock tributes, children’s theater events, and more. Performances are held at Van H. Priest Auditorium, located on the NFCC campus in Madison, FL. For more information about the auditorium call (850) 973-9429 or visit [www.nfcc.edu/community-programs/van-h-priest](http://www.nfcc.edu/community-programs/van-h-priest).





# NFCC

*Campus Life*





# Student Clubs and Organizations

NFCC provides a variety of opportunities for students to participate in College-sponsored student organizations. The following organizations allow students with similar interests a forum for discussing these interests and collaborating on projects to enhance learning in these areas.

- Art Club
- Astronomy Club
- Business Club
- Health Occupations Students of America (HOSA)
- Phi Theta Kappa (PTK)
- Save Our Animal Resources (SOAR)
- Sentinel Service Corp
- Student Government Association (SGA)
- Young Engineers Club



Students having common interests may form other clubs, groups, or organizations as approved by the Student Government Association and the Coordinator of Student Activities. Such activities may be related to courses, sports, service to the college and the community, publications, religion, and social life.

# Community Theatre



Whether one desires the spotlight or enjoys being part of the backstage fellowship, the NFCC Sentinel Upstage Players has opportunities for students and community members alike. At least one major production is held in the Van H. Priest Auditorium each year, and auditions are open to the public.

Participants gain experience in acting, set construction, and design, and the technical aspects of the theater, such as lighting and sound. Audition dates are posted on campus and in the local newspapers. For information call (850) 973-9481 or visit [www.nfcc.edu/community-programs/community-theatre](http://www.nfcc.edu/community-programs/community-theatre).

# Performing Artist Series

The College presents a number of artists during the school year including musical groups, dance troupes and theatrical groups. Students may purchase tickets at discounted rates. Information about the NFCC Artist Series is available at [www.nfcc.edu/community-programs/artist-series](http://www.nfcc.edu/community-programs/artist-series) or contact the NFCC College Advancement Office at (850) 973-1653 or [ArtistSeries@nfcc.edu](mailto:ArtistSeries@nfcc.edu).

## Community Education

The Office of Student Activities offers a wide array of classes. These non-credit/non-certificate classes vary in length and cost. Offerings change from semester to semester. For a complete listing of classes, please refer to the Community Education web page at [www.nfcc.edu/community-programs/community-education](http://www.nfcc.edu/community-programs/community-education) or call (850) 973-9481. There are no enrollment requirements for these classes. However, depending on the class, there may be some age restrictions.



Classes include, but are not limited to:

- Health and Fitness Classes
- Hunter Safety Classes
- Private Guitar Lessons
- Summer Camps for Children - Kids in College

NFCC is also a Community Training Center offering American Heart Association CPR courses on an as-needed basis.

## Education to Go (ed2go) Online Non-Credit Classes

This program offers many online non-credit classes for the general public that are available all year in six-week blocks with two lessons per week. All classes are instructor facilitated. The variety of classes changes from term to term and enrollment dates are limited. For course descriptions and enrollment procedures, please refer to the ed2go schedule available online at the NFCC website ([www.nfcc.edu](http://www.nfcc.edu)) or call (850) 973-9481.

### Program Courses

- ✓ Art, History, Psychology, & Literature
- ✓ Business and Accounting
- ✓ Certification Prep
- ✓ Child Care & Parenting
- ✓ Computer & Programming
- ✓ Desktop Publishing & Imaging
- ✓ Digital Photography & Digital Video
- ✓ Entertainment Industry Careers
- ✓ Family & Personal Enrichment
- ✓ Grant Writing & Nonprofit Management
- ✓ Health Care, Nutrition & Fitness
- ✓ Internet
- ✓ Languages
- ✓ Law and Legal Careers
- ✓ Math, Philosophy, & Science
- ✓ Personal & Career



# Campus Security

Campus Security at North Florida Community College provides a safe and secure environment for students, faculty, staff, and guests.

## Campus Escort

Campus Security will provide escorts (by foot or vehicle), upon request, to and from campus buildings and parking lots for students and employees. If you want someone to walk with you or you need a ride around Campus, call Campus Security at 850-973-0280.

## Campus Alerts

We now have the ability to send text messages to cell phones in order to notify NFCC students and employees in the event of a campus-wide emergency or closing due to inclement weather. Registering your phone takes only a few minutes, and you may register two devices as well as an alternate email address. This system will only be used for emergency messages at this time.

## Firearms and Weapons Prohibitions

A safe and secure environment is a priority for fulfilling the mission of North Florida Community College. North Florida Community College is committed to maintaining a campus that is free of violence. This obligation includes eliminating recognized hazards from the campus community that contribute to violence or serious harm.

## 2014 Crime Statistics

Criminal Offenses – On-Campus	2012	2013	2014
Murder/Non-negligent Manslaughter	0	0	0
Negligent Manslaughter	0	0	0
Sex Offenses – Forcible	0	0	-
Rape	-	-	0
Fondling	-	-	0
Sex Offenses – Non-forcible (incest and statutory rape only)	0	0	-
Incest	-	-	0
Statutory Rape	-	-	0
Robbery	0	0	0
Aggravated Assault	0	0	0
Burglary	1	0	0
Motor Vehicle Theft	0	0	0
Arson	0	0	0

- The crime data reported by the institutions have not been subjected to independent verification by the U.S. Department of Education. Therefore, the Department cannot vouch for the accuracy of the data reported here.
- Rape, Fondling, Incest and Statutory Rape statistics were not collected prior to the 2015 data collection.
- As of the 2015 data collection, statistics for Sex offenses - Forcible and Sex offenses - Non-forcible are no longer collected.
- For 2013, Line k was changed from 1 to 0. This had been classified as an attempted auto burglary. Attempted theft from a Motor Vehicle is not a Clery reportable crime.

Source: <http://ope.ed.gov/security>







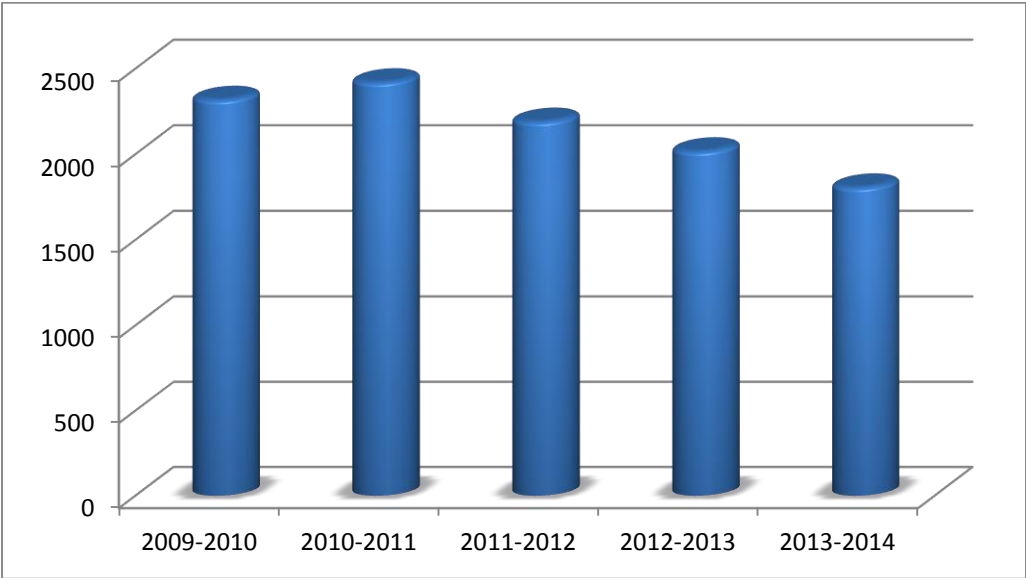
# NFCC

## *The Student Population*



# Total Student Headcount

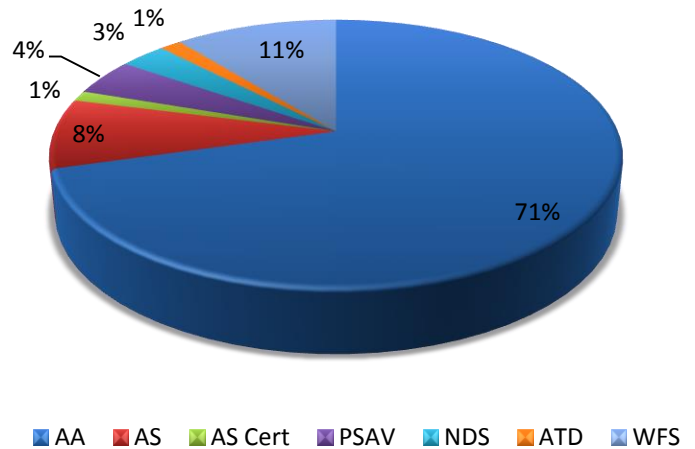
2009-2010	2010-2011	2011-2012	2012-2013	2013-2014	2014-2015
2317	2419	2189	2016	1805	1979



# Enrollment by Program

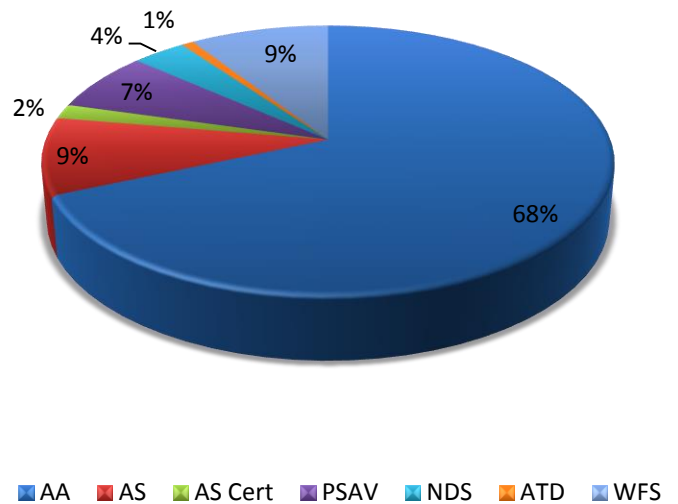
## FALL 2014

Program	Number Enrolled	Percentage
AA	1027	71%
AS	122	8%
AS Cert	18	1%
PSAV	64	4%
NDS	45	3%
ATD	21	1%
WFS	158	11%
<b>Total</b>	<b>1455</b>	



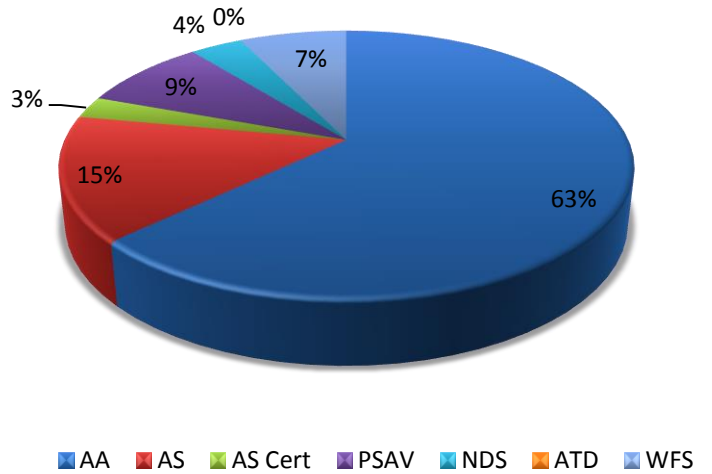
## SPRING 2015

Program	Number Enrolled	Percentage
AA	868	68%
AS	117	9%
AS Cert	22	2%
PSAV	90	7%
NDS	45	4%
ATD	10	1%
WFS	116	9%
<b>Total</b>	<b>1268</b>	



## SUMMER 2015

Program	Number Enrolled	Percentage
AA	408	63%
AS	97	15%
AS Cert	17	3%
PSAV	56	9%
NDS	23	4%
ATD	0	0%
WFS	47	7%
<b>Total</b>	<b>648</b>	



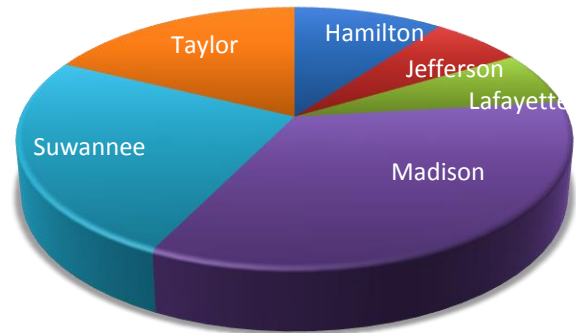
### Legend of programs:

- AA: Associate in Arts
- AS: Associate in Science
- AS Cert: College Credit Certificate
- PSAV: Post-Secondary Adult Vocational Certificate
- NDS: Non-Degree Seeking
- ATD: Applied Technical Diploma
- WFS: Workforce / Supplemental

# County Enrollment by Term

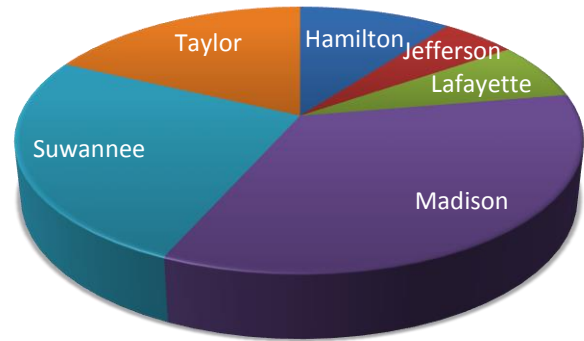
## FALL 2014

County	Number Enrolled	Percentage
Hamilton	134	9.2%
Jefferson	83	5.7%
Lafayette	86	5.9%
Madison	449	30.9%
Suwannee	327	22.5%
Taylor	233	16.0%
Other FL	102	7.0%
Out of State	41	2.8%
<b>Total</b>	<b>1455</b>	



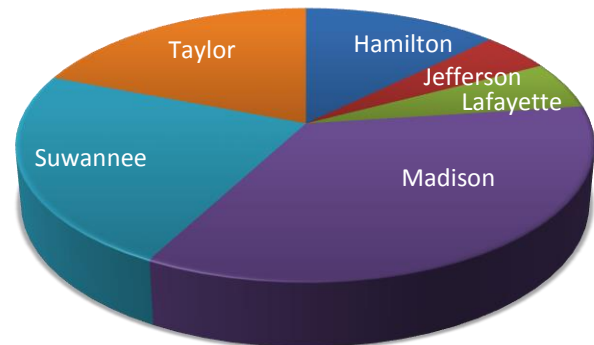
## SPRING 2015

County	Number Enrolled	Percentage
Hamilton	117	9.2%
Jefferson	58	4.6%
Lafayette	79	6.2%
Madison	390	30.8%
Suwannee	289	22.8%
Taylor	204	16.1%
Other FL	94	7.4%
Out of State	37	2.9%
<b>Total</b>	<b>1268</b>	



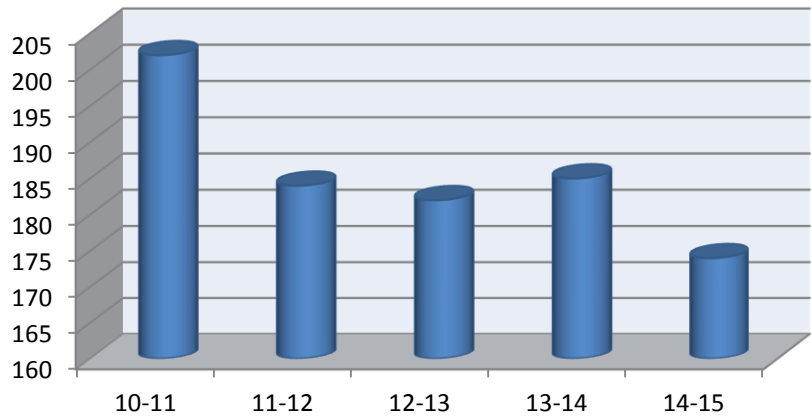
## SUMMER 2015

County	Number Enrolled	Percentage
Hamilton	77	11.9%
Jefferson	28	4.3%
Lafayette	34	5.2%
Madison	212	32.7%
Suwannee	140	21.6%
Taylor	116	17.9%
Other FL	24	3.7%
Out of State	17	2.6%
<b>Total</b>	<b>648</b>	

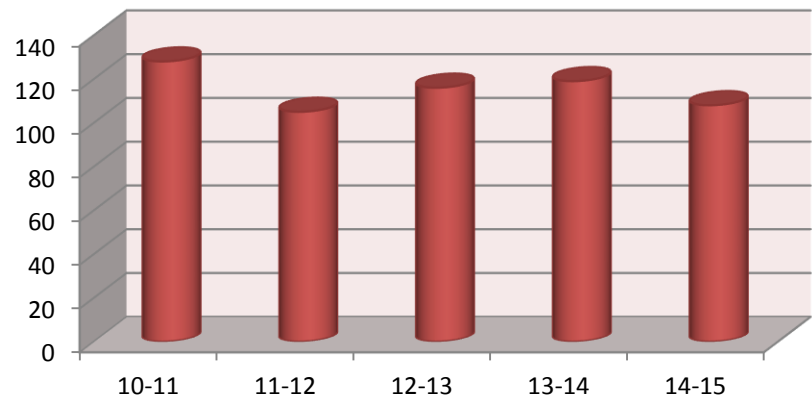


# 5 Year County Enrollment

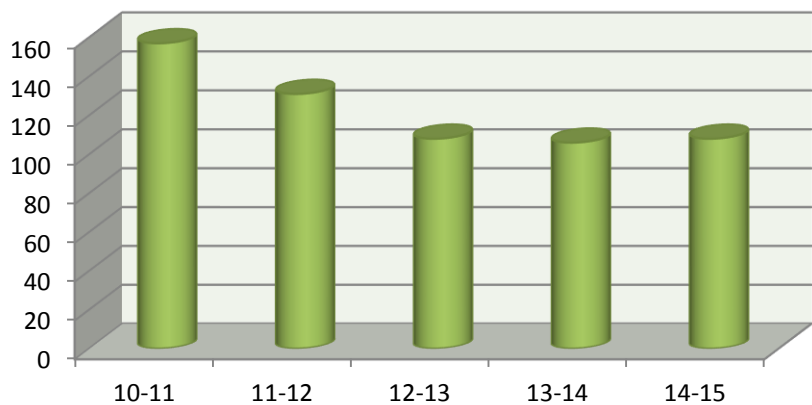
Hamilton	
10-11	202
11-12	184
12-13	182
13-14	185
14-15	174



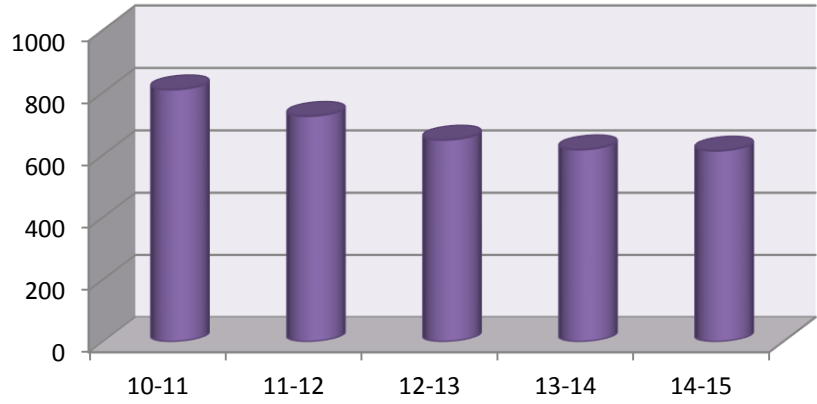
Jefferson	
10-11	128
11-12	105
12-13	116
13-14	119
14-15	108



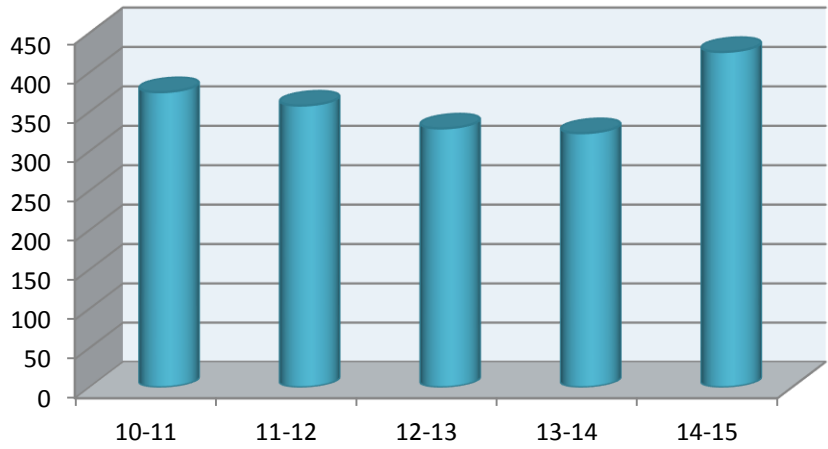
Lafayette	
10-11	157
11-12	131
12-13	108
13-14	106
14-15	108



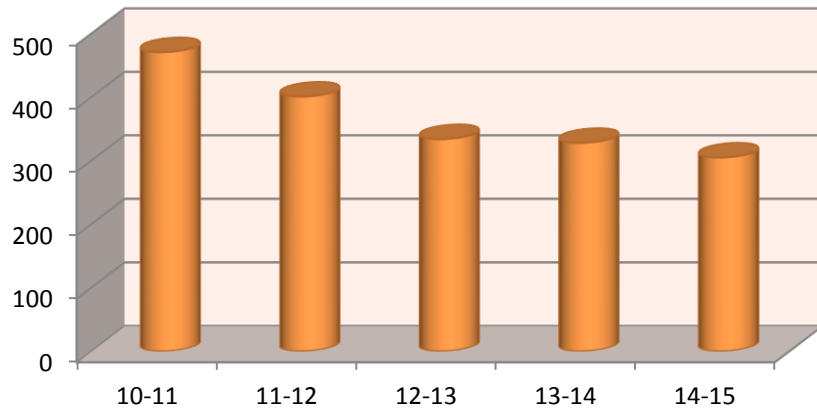
<b>Madison</b>	
<b>10-11</b>	810
<b>11-12</b>	725
<b>12-13</b>	649
<b>13-14</b>	618
<b>14-15</b>	614



<b>Suwannee</b>	
<b>10-11</b>	375
<b>11-12</b>	358
<b>12-13</b>	329
<b>13-14</b>	323
<b>14-15</b>	426

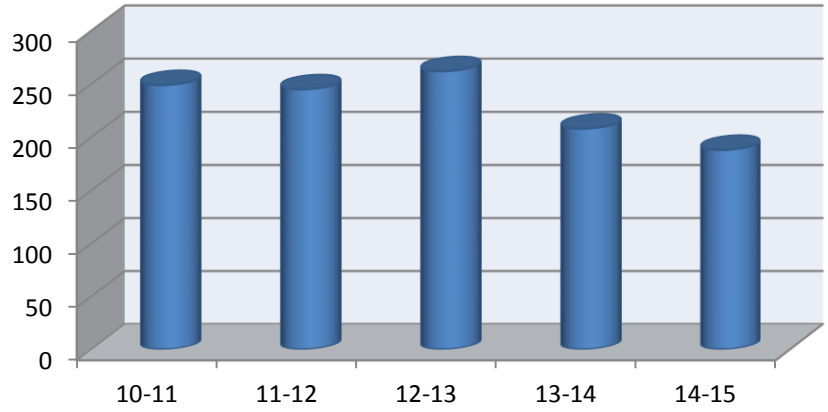


<b>Taylor</b>	
<b>10-11</b>	471
<b>11-12</b>	401
<b>12-13</b>	334
<b>13-14</b>	328
<b>14-15</b>	305

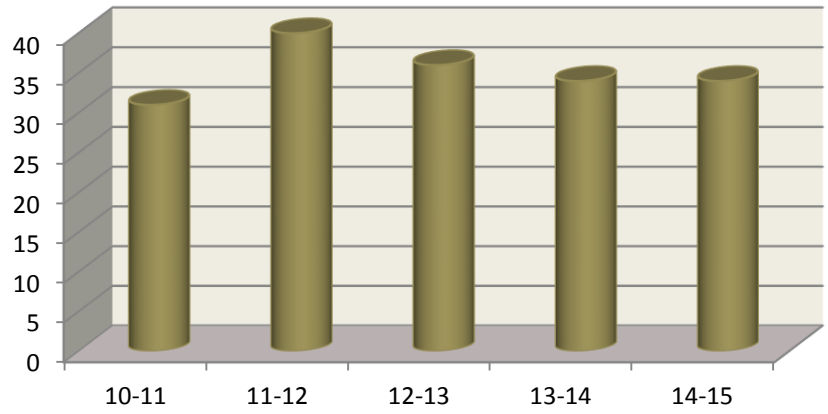




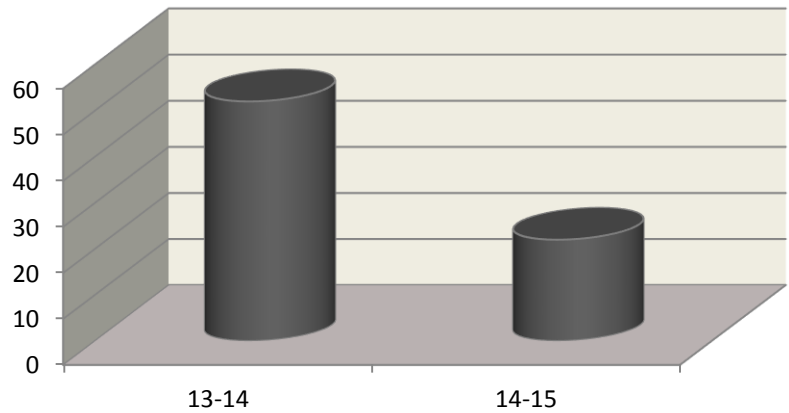
<b>Other Florida</b>	
<b>10-11</b>	249
<b>11-12</b>	245
<b>12-13</b>	262
<b>13-14</b>	208
<b>14-15</b>	188



<b>Out of State</b>	
<b>10-11</b>	31
<b>11-12</b>	40
<b>12-13</b>	36
<b>13-14</b>	34
<b>14-15</b>	34



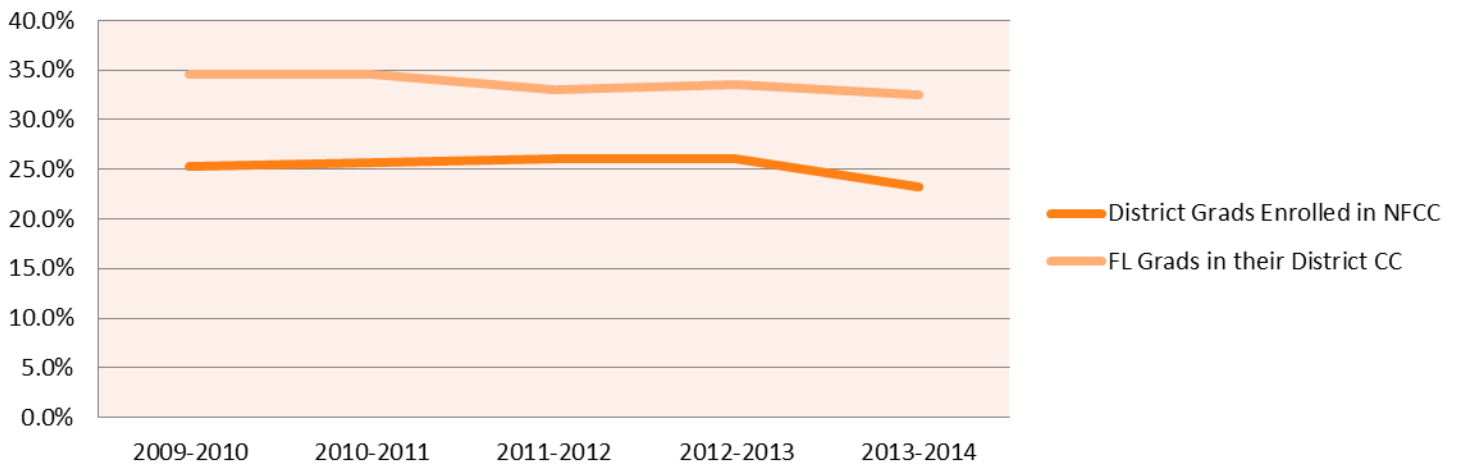
<b>Undisclosed</b>	
<b>13-14</b>	52
<b>14-15</b>	22



# District High School Graduates Enrolled

	2009-2010	2010-2011	2011-2012	2012-2013	2013-2014	2014-2015
<b>District Grads Enrolled in NFCC</b>	25.2%	25.7%	26.0%	26.0%	23.3%	24.1%
<b>FL Grads in their District CC</b>	34.6%	34.6%	33.0%	33.5%	32.5%	32.4%

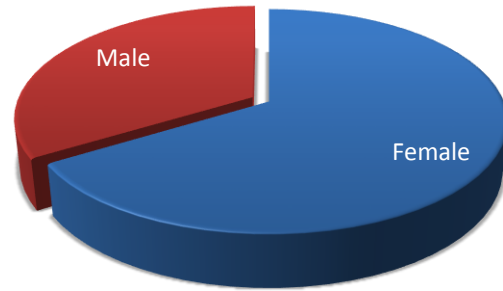
Chart Title



# Enrollment by Gender

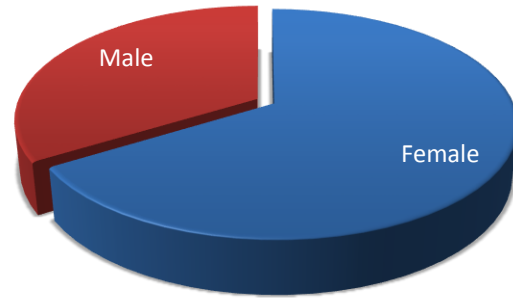
## Fall 2014

<b>Female</b>	954	66%
<b>Male</b>	498	34%



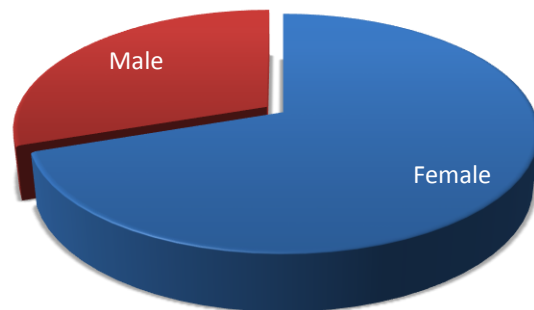
## Spring 2015

<b>Female</b>	848	67%
<b>Male</b>	415	33%



## Summer 2015

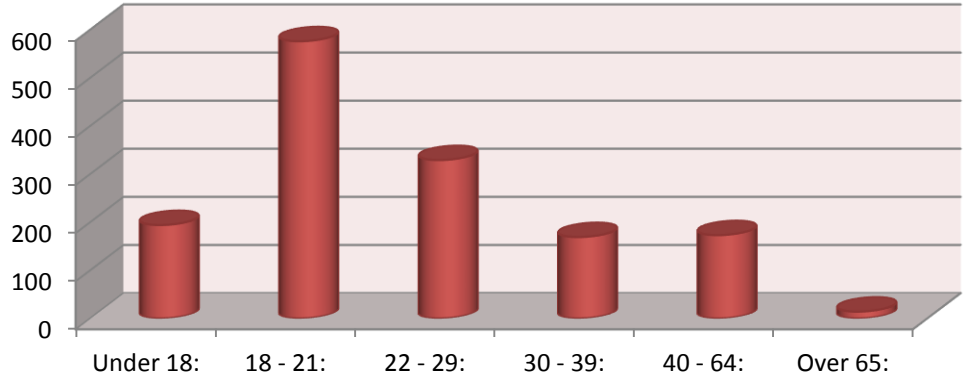
<b>Female</b>	425	66%
<b>Male</b>	221	34%



# Enrollment by Age

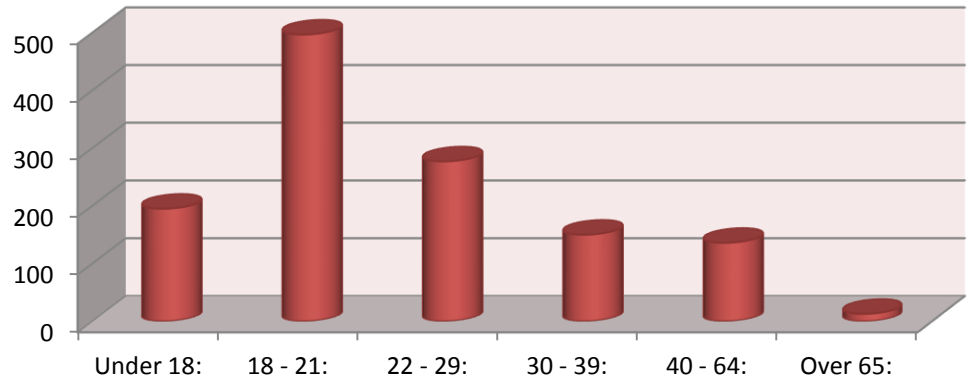
## Fall 2014

Under 18:	194
18 - 21:	576
22 - 29:	329
30 - 39:	169
40 - 64:	173
Over 65:	14
<b>Total:</b>	<b>1455</b>
<b>Average Age:</b>	<b>26</b>



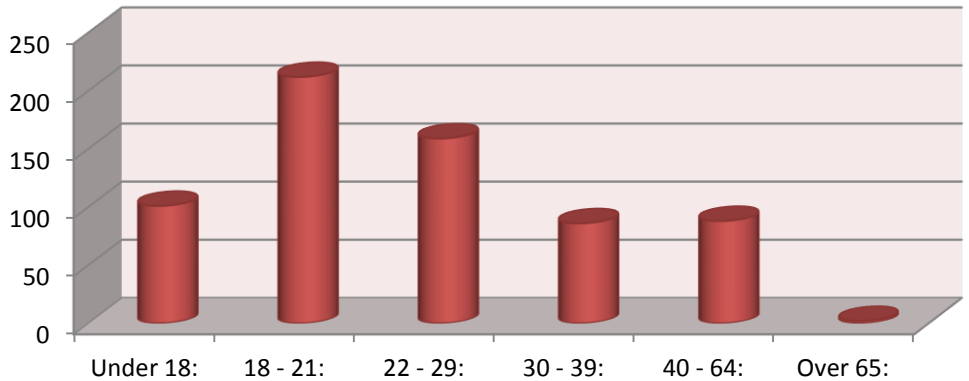
## Spring 2015

Under 18:	195
18 - 21:	497
22 - 29:	277
30 - 39:	150
40 - 64:	136
Over 65:	13
<b>Total:</b>	<b>1268</b>
<b>Average Age:</b>	<b>25</b>



## Summer 2015

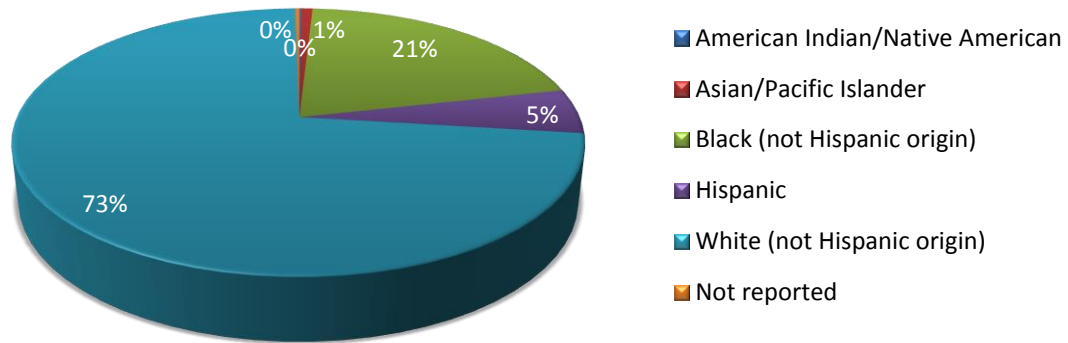
Under 18:	101
18 - 21:	212
22 - 29:	159
30 - 39:	86
40 - 64:	88
Over 65:	2
<b>Total:</b>	<b>648</b>
<b>Average Age:</b>	<b>26</b>



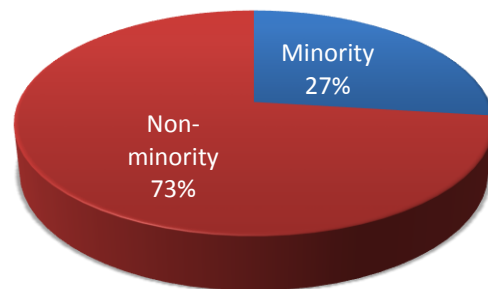
# Enrollment by Ethnicity

**FALL 2014**

Ethnicity	Number	Percent
American Indian/Native American	2	0%
Asian/Pacific Islander	11	1%
Black (not Hispanic origin)	300	21%
Hispanic	79	5%
White (not Hispanic origin)	1059	73%
Not reported	4	0%
<b>Total</b>	<b>1455</b>	



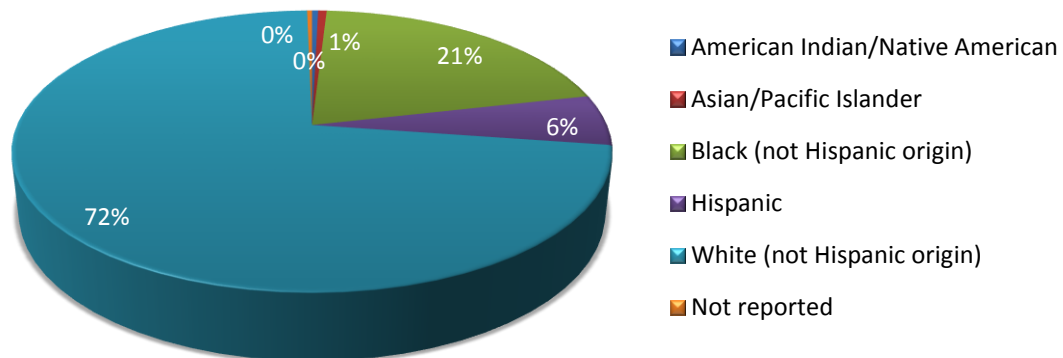
	Number
Total minorities:	392
Total non-minority:	1059



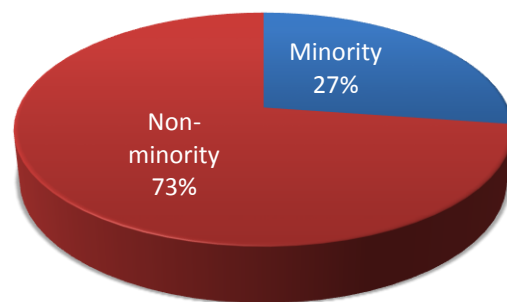


## SPRING 2015

Ethnicity	Number	Percent
American Indian/Native American	5	0%
Asian/Pacific Islander	7	1%
Black (not Hispanic origin)	260	21%
Hispanic	74	6%
White (not Hispanic origin)	918	72%
Not reported	4	0%
<b>Total</b>	<b>1268</b>	

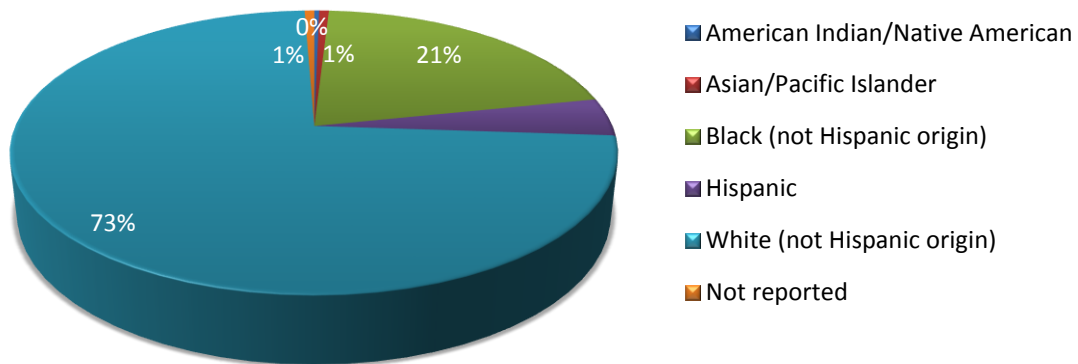


	Number
Total minorities:	346
Total non-minority:	918

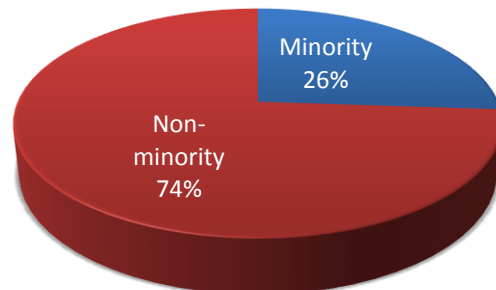


## SUMMER 2015

Ethnicity	Number	Percent
American Indian/Native American	2	0.3%
Asian/Pacific Islander	4	1%
Black (not Hispanic origin)	135	21%
Hispanic	28	4%
White (not Hispanic origin)	475	73%
Not reported	4	1%
<b>Total</b>	<b>648</b>	



	Number
Total minorities:	169
Total non-minority:	475



# Enrollment Schedule by Day and Time

## FALL 2014

	Monday	Tuesday	Wednesday	Thursday	Friday	Saturday	Sunday
7:30 - 9:15 a.m.	381	391	407	377	221	36	0
9:15 - 10:45 a.m.	342	279	368	276	123	0	0
10:45 - 12:15 p.m.	250	156	270	163	10	0	0
12:15 - 1:45 p.m.	234	197	240	190	105	36	0
1:45 - 4:00 p.m.	151	85	151	77	0	0	0
4:00 p.m. or later	105	101	123	55	24	12	12
<b>Total</b>	<b>1463</b>	<b>1209</b>	<b>1559</b>	<b>1138</b>	<b>483</b>	<b>84</b>	<b>12</b>

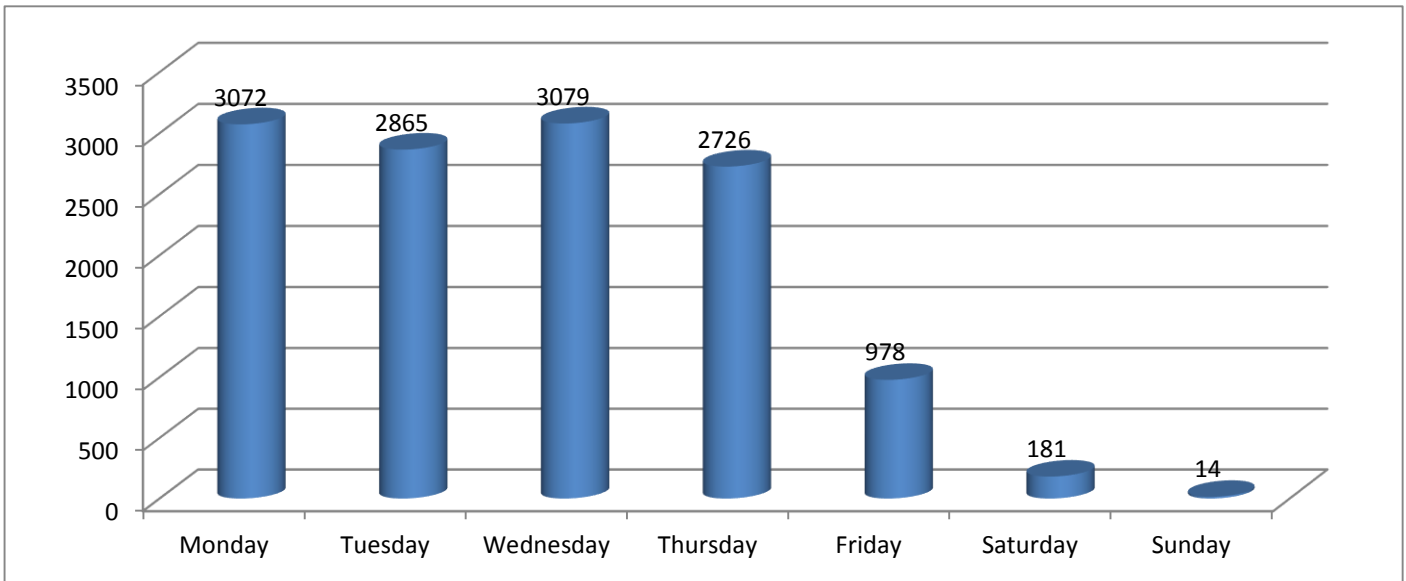
## SPRING 2015

	Monday	Tuesday	Wednesday	Thursday	Friday	Saturday	Sunday
7:30 - 9:15 a.m.	346	383	337	394	218	57	2
9:15 - 10:45 a.m.	269	232	290	219	95	0	0
10:45 - 12:15 p.m.	189	194	183	194	30	0	0
12:15 - 1:45 p.m.	238	207	249	219	97	40	0
1:45 - 4:00 p.m.	113	113	118	57	0	0	0
4:00 p.m. or later	89	89	72	112	11	0	0
<b>Total</b>	<b>1244</b>	<b>1218</b>	<b>1249</b>	<b>1195</b>	<b>451</b>	<b>97</b>	<b>2</b>

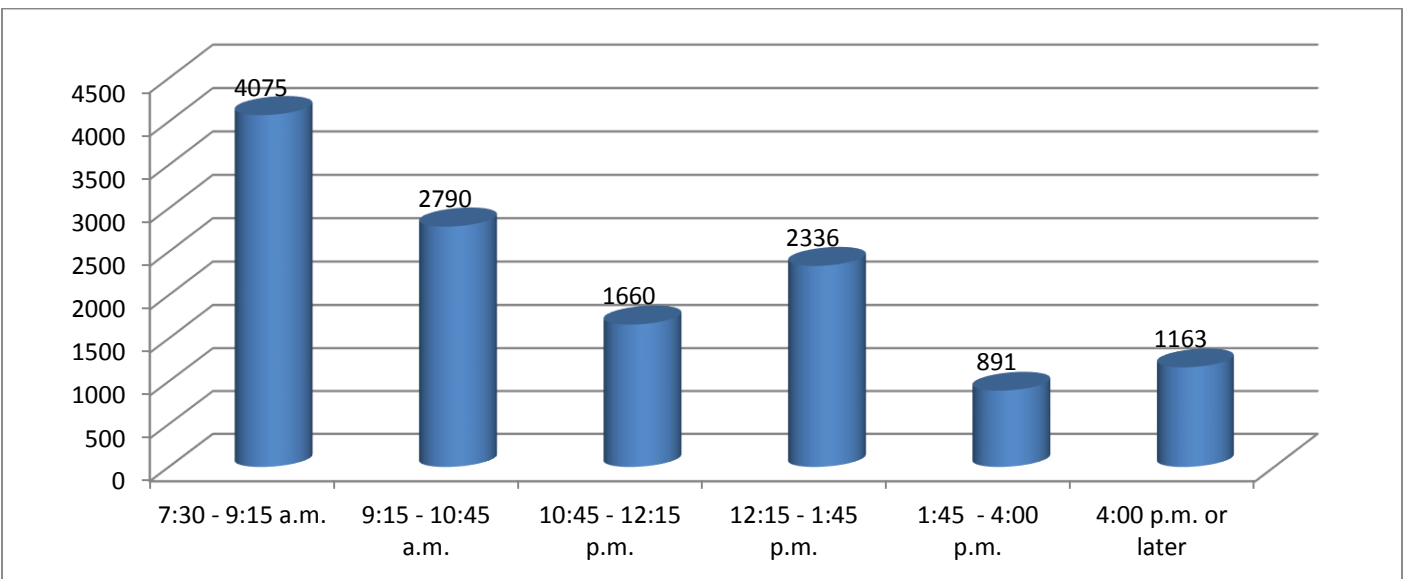
## SUMMER 2015

	Monday	Tuesday	Wednesday	Thursday	Friday	Saturday	Sunday
7:30 - 9:15 a.m.	140	168	93	118	6	0	0
9:15 - 10:45 a.m.	87	72	66	72	0	0	0
10:45 - 12:15 p.m.	0	21	0	0	0	0	0
12:15 - 1:45 p.m.	71	84	45	84	0	0	0
1:45 - 4:00 p.m.	0	0	0	26	0	0	0
4:00 p.m. or later	67	93	67	93	38	0	0
<b>Total</b>	<b>365</b>	<b>438</b>	<b>271</b>	<b>393</b>	<b>44</b>	<b>0</b>	<b>0</b>

## 2014-2015 Enrollment by Day of Week



## 2014-2015 Enrollment by Time of Day



## Instructor to Student Ratio

	<b>Students</b>	<b>Courses</b>	<b>Instructors</b>	<b>Ratio</b>
<b>2009-2010</b>	2317	634	105	22
<b>2010-2011</b>	2423	687	110	22
<b>2011-2012</b>	2189	620	102	21
<b>2012-2013</b>	2016	593	85	24
<b>2013-2014</b>	1805	510	79	23

## Average Class Size

<b>2013-2014</b>	<b>Credit</b>	<b>PSAV</b>	<b>College Prep</b>
<b>Fall</b>	22	15	15
<b>Spring</b>	21	13	15
<b>Summer</b>	20	13	11

<b>2014-2015</b>	<b>Credit</b>	<b>PSAV</b>	<b>College Prep</b>
<b>Fall</b>	22	17	20
<b>Spring</b>	20	16	16
<b>Summer</b>	18	16	11



# NFCC

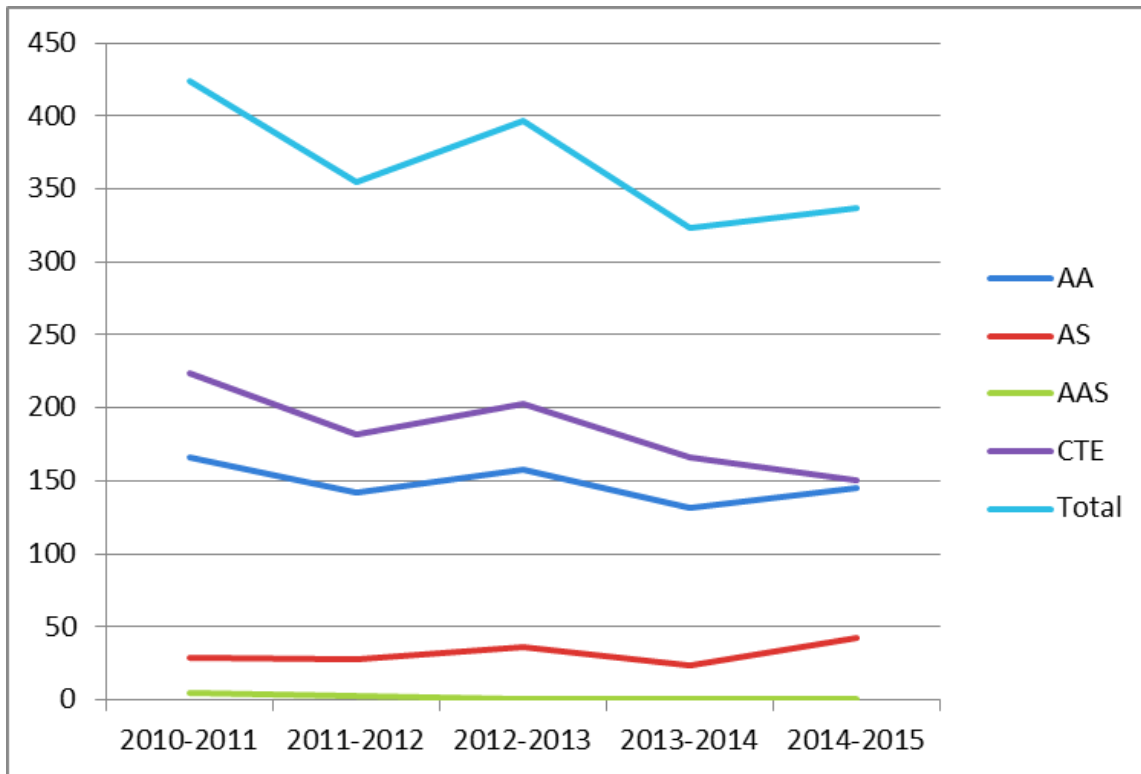
*Student Success*





# Degrees Awarded

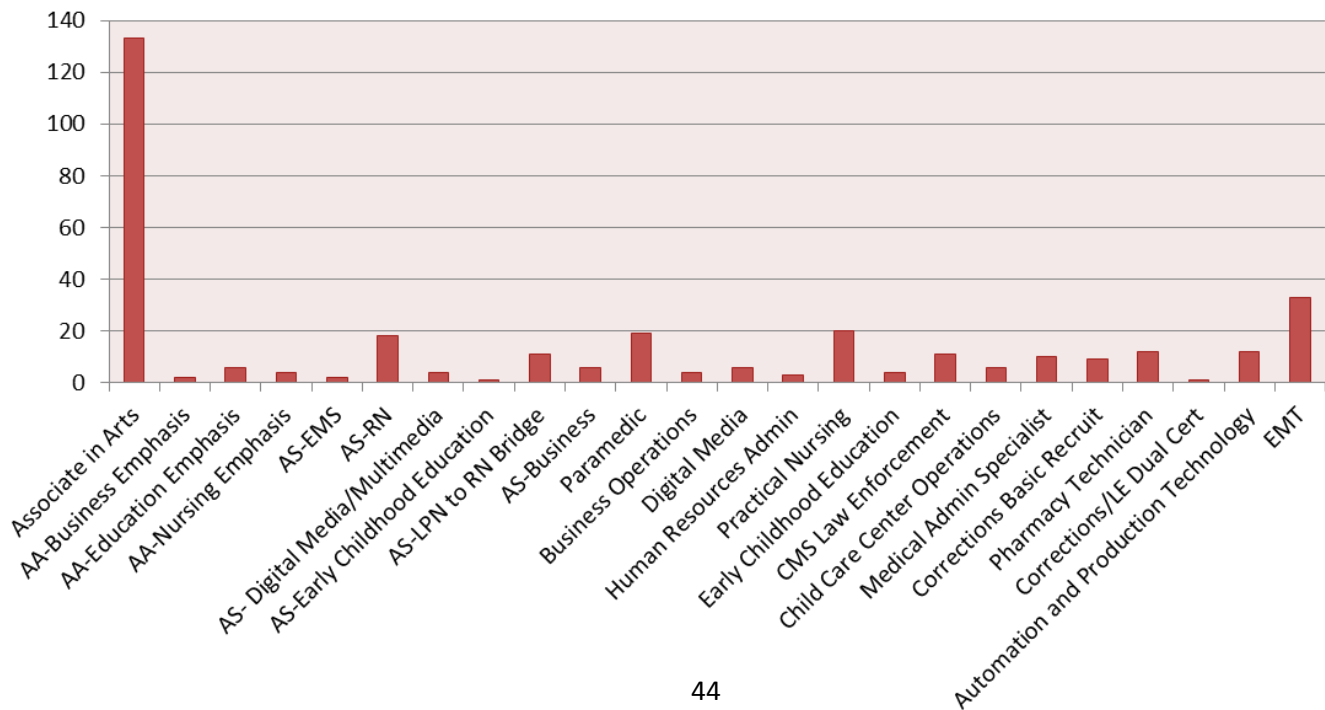
	2010-2011	2011-2012	2012-2013	2013-2014	2014-2015
<b>AA</b>	166	142	158	132	145
<b>AS</b>	29	28	36	24	42
<b>AAS</b>	5	3	0	1	0
<b>CTE</b>	224	182	203	166	150
<b>Total</b>	424	355	397	323	337



# Graduates by Program

2014-2015

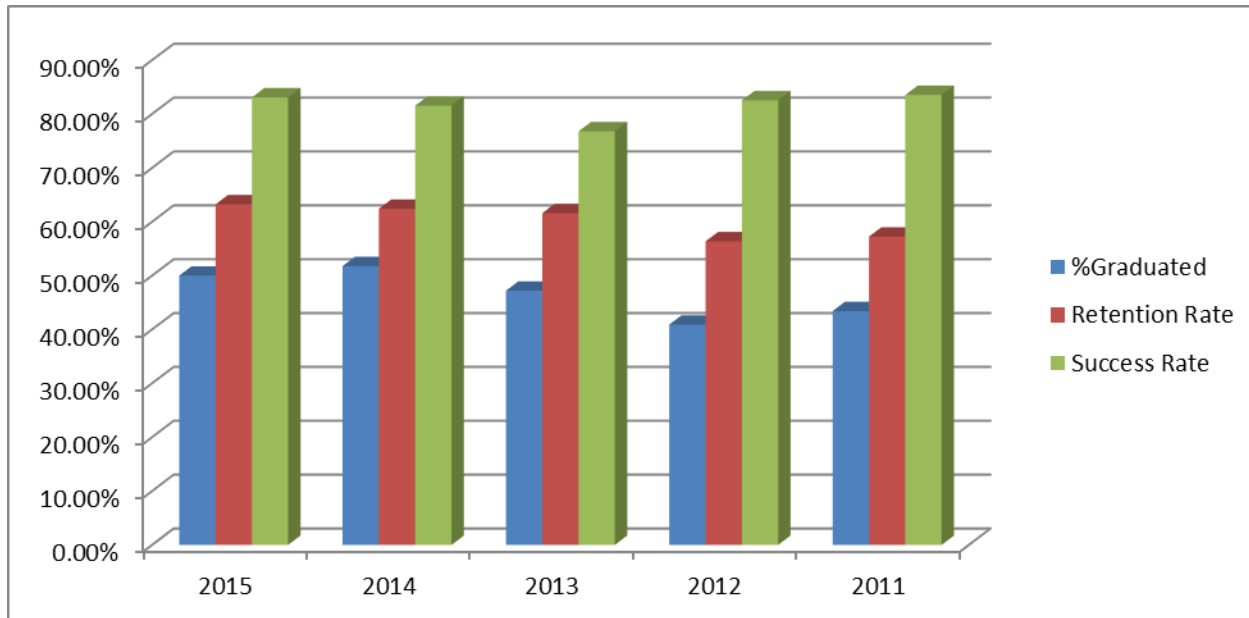
Associate in Arts	133
AA-Business Emphasis	2
AA-Education Emphasis	6
AA-Nursing Emphasis	4
AS-EMS	2
AS-RN	18
AS- Digital Media/Multimedia	4
AS-Early Childhood Education	1
AS-LPN to RN Bridge	11
AS-Business	6
Paramedic	19
Business Operations	4
Digital Media	6
Human Resources Admin	3
Practical Nursing	20
Early Childhood Education	4
CMS Law Enforcement	11
Child Care Center Operations	6
Medical Admin Specialist	10
Corrections Basic Recruit	9
Pharmacy Technician	12
Corrections/LE Dual Cert	1
Automation and Production Technology	12
EMT	33



# First Time in College Retention & Success

	Cohort	% Graduated	Retention Rate	Success Rate
<b>2015</b>	144	52.08%	62.5	76.39%
<b>2014</b>	136	50.00%	63.24%	83.09%
<b>2013</b>	141	51.77%	62.41%	81.56%
<b>2012</b>	125	47.20%	61.60%	76.80%
<b>2011</b>	149	40.90%	56.38%	82.55%
<b>2010</b>	152	43.42%	57.24%	83.55%

2015 tracking period Fall 2011 through 2015  
 2014 tracking period Fall 2010 through 2014  
 2013 tracking period Fall 2009 through 2013  
 2012 tracking period Fall 2008 through 2012  
 2011 tracking period Fall 2007 through 2011  
 2010 tracking period Fall 2006 through 2010



Source: Accountability Outcome Measure 1 Part 2

# College Preparatory Retention & Success

	Cohort	% Graduated	Retention Rate	Success Rate
<b>2015</b>	31	38.71%	48.39%	67.74%
<b>2014</b>	30	53.33%	73.33%	90.00%
<b>2013</b>	31	38.71%	61.29%	77.42%
<b>2012</b>	27	33.33%	59.26%	70.37%
<b>2011</b>	43	13.95%	44.19%	79.07%
<b>2010</b>	43	37.21%	62.79%	90.70%

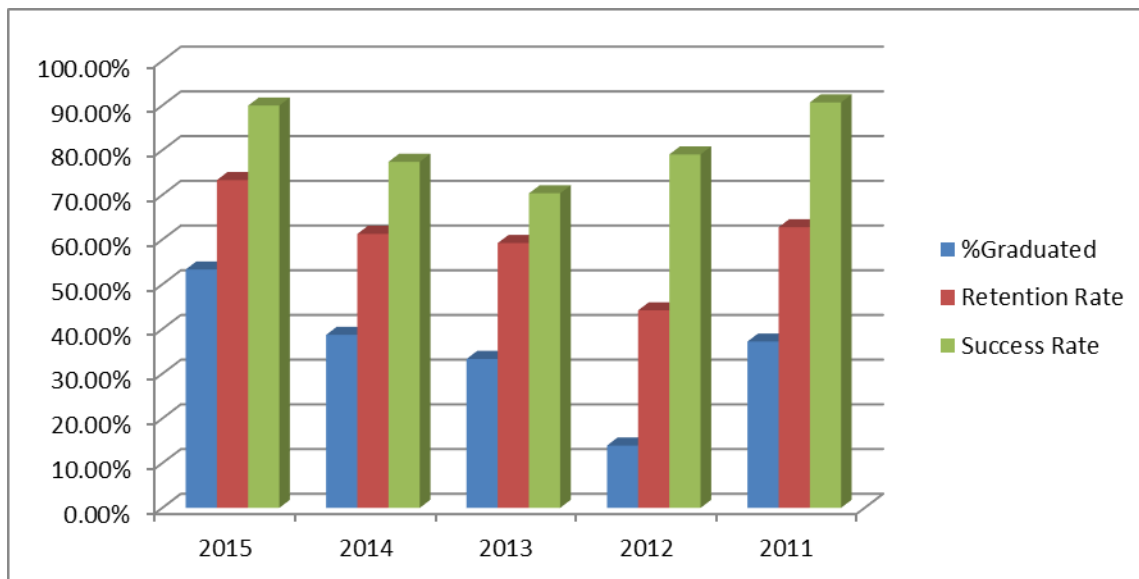
2014 tracking period Fall 2010 through 2014

2013 tracking period Fall 2009 through 2013

2012 tracking period Fall 2008 through 2012

2011 tracking period Fall 2007 through 2011

2010 tracking period Fall 2006 through 2010



Source: Accountability Outcome Measure 4 Part 2

# Vocational Placement

	2012-2013			2011-2012			2010-2011		
	Pool	Placed	% Placed	Pool	Placed	% Placed	Pool	Placed	% Placed
Emergency Medical Technician	30	23	76.67	25	17	68.00	13	13	100.00
Paramedic	20	13	65.00	20	18	90.00	5	5	100.00
Emergency Medical Services - AS Degree	6	6	100.00	1	1	100.00	2	2	100.00
Practical Nursing	7	7	100.00	34	34	100.00	6	6	100.00
Patient Care Technician	21	19	90.48	8	8	100.00	19	19	100.00
Nursing	17	16	94.12	19	19	100.00	1	1	100.00
Early Childhood Education - AS Degree	0	0	0.00	0	0	0.00	1	1	100.00
Early Childhood Education	6	6	100.00	7	4	57.14	6	6	100.00
Medical Secretary	4	3	75.00	0	0	0.00	0	0	0.00
Child Care Center Management	1	1	100.00	0	0	0.00	0	0	0.00
Child Care Center Operations	4	2	50.00	9	6	66.67	0	0	0.00
Business Administration	1	1	100.00	2	2	100.00	0	0	0.00
Business Operations	2	2	100.00	3	3	100.00	0	0	0.00
Human Resource Administrator	2	2	100.00	0	0	0.00	0	0	0.00
Administrative Assistant	0	0	0.00	0	0	0.00	4	4	100.00
Media Production	2	2	100.00	0	0	0.00	0	0	0.00
Architectural Drafting	0	0	0.00	0	0	0.00	2	2	100.00
Multimedia Presentation	1	1	100.00	0	0	0.00	0	0	0.00
Digital Media/Multimedia Technology	1	1	100.00	0	0	0.00	0	0	0.00
Web Production	1	1	100.00	0	0	0.00	0	0	0.00
Multimedia Authoring	0	0	0.00	1	1	100.00	0	0	0.00
Cisco CCNA Certificate	0	0	0.00	0	0	0.00	0	0	0.00
Correctional Officer	1	1	100.00	6	5	83.33	6	6	100.00
Criminal Justice Technology	0	0	0.00	2	1	50.00	2	2	100.00
Law Enforcement Officer	18	14	77.78	10	7	70.00	6	6	100.00
Correctional Officer to Law Enforcement Officer	9	9	100.00	12	11	91.67	6	6	100.00
Law Enforcement Officer to Correctional Officer	0	0	0.00	0	0	0.00	0	0	0.00
<b>Total</b>	<b>154</b>	<b>130</b>	<b>84.42</b>	<b>159</b>	<b>137</b>	<b>86.16</b>	<b>79</b>	<b>79</b>	<b>100.00</b>

Source: Accountability Outcome Measure 3 Part 2



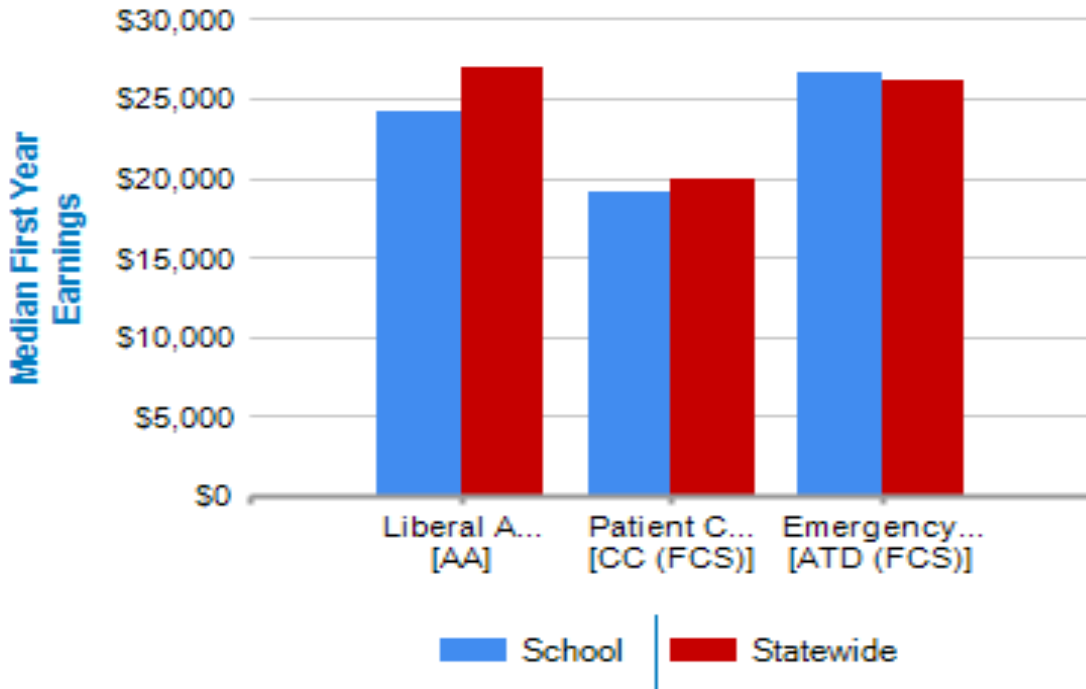
# Economic Success Measures

## 1<sup>st</sup> Year Outcomes for 5 Graduating Classes 2007/08 - 2011/12

Degree Level	Disclosable Programs	# of Graduates/ Completers	Total Found Employed Percent	Total Found Employed Full Time Percent	Median First Year Earnings	Found Continuing Education Percent	Public Assistance Percent
Technical Certificate	<b>12 disclosable programs</b>	<b>527</b>	<b>78%</b>	<b>57%</b>	<b>\$32,214</b>	<b>39%</b>	<b>21%</b>
	Administrative Office Specialist	13	23%	8%	*	46%	85%
	Child Care Center Operations	11	64%	36%	*	36%	0%
	Correctional Officer	92	86%	66%	\$30,940	21%	17%
	Correctional Officer to Law Enforcement Officer (Crossover)	56	96%	89%	\$35,158	41%	0%
	Drafting (Architectural)	18	56%	33%	*	44%	0%
	Drafting (Mechanical)	11	45%	27%	*	18%	0%
	Early Childhood Education	30	63%	37%	\$19,068	43%	40%
	Law Enforcement Officer	87	75%	63%	\$32,440	32%	0%
	Law Enforcement Officer to Correctional Officer (Crossover)	*	100%	100%	*	0%	0%
	Patient Care Technician	131	63%	17%	\$19,200	63%	35%
	Practical Nursing	108	92%	86%	\$33,328	24%	10%
	Private Security Officer	*	57%	57%	*	0%	0%
Applied Technology Diploma	<b>1 disclosable programs</b>	<b>129</b>	<b>78%</b>	<b>52%</b>	<b>\$26,636</b>	<b>38%</b>	<b>9%</b>
	Emergency Medical Technology/Technician (EMT Paramedic)	129	78%	52%	\$26,636	38%	9%
College Credit Certificate	<b>5 disclosable programs</b>	<b>118</b>	<b>86%</b>	<b>75%</b>	<b>\$44,580</b>	<b>28%</b>	<b>0%</b>
	Business Administration	*	67%	67%	*	67%	0%
	EMT	29	72%	55%	\$37,630	34%	0%
	Paramedic	85	89%	81%	\$46,120	24%	0%
	Executive Secretarial	*	100%	100%	*	0%	0%
Digital Media/Multimedia	*	100%	0%	*	100%	0%	
Associate in Applied Science Degree	<b>4 disclosable programs</b>	<b>22</b>	<b>95%</b>	<b>86%</b>	<b>\$37,720</b>	<b>59%</b>	<b>0%</b>
	Child Care Provider/Assistant	*	100%	83%	*	50%	0%
	Computer Systems Networking and Telecommunications	*	0%	0%	*	0%	0%
	Criminal Justice/Law Enforcement Administration	14	100%	93%	\$54,744	64%	0%
Executive Secretarial	*	100%	100%	*	100%	0%	
Associate in Science	<b>4 disclosable programs</b>	<b>116</b>	<b>71%</b>	<b>61%</b>	<b>\$47,028</b>	<b>16%</b>	<b>0%</b>
	Business Administration	*	0%	0%	*	100%	0%
	Computer Systems Networking and Telecommunications	*	0%	0%	*	0%	0%
	Emergency Medical Services	13	85%	77%	\$46,742	46%	0%
	Nursing, General	100	71%	61%	\$47,028	11%	0%
Associate in Arts Degree	<b>1 disclosable programs</b>	<b>692</b>	<b>53%</b>	<b>28%</b>	<b>\$24,124</b>	<b>66%</b>	<b>9%</b>
	Liberal Arts and Sciences/Liberal Studies	691	54%	28%	\$24,124	66%	9%
Educator Preparation Institute Certificate	<b>1 disclosable programs</b>	<b>70</b>	<b>76%</b>	<b>66%</b>	<b>\$35,472</b>	<b>4%</b>	<b>0%</b>
	Education, Other	70	76%	66%	\$35,472	4%	0%

Source: beyondeducation.org

# Three Most Popular Disclosable Programs



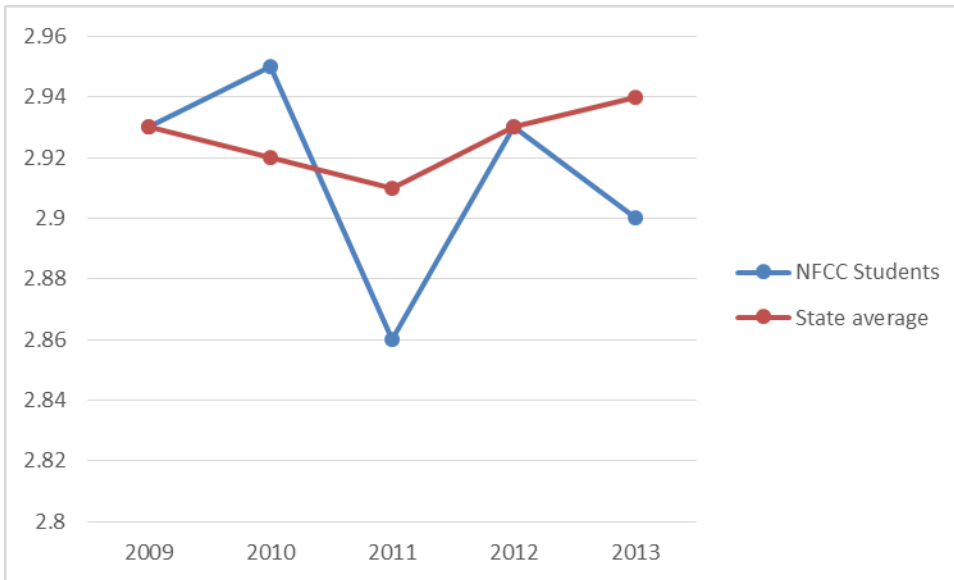
Source: beyondeducation.org





# NFCC Transfer Success

Mean cumulative grade-point averages for NFCC graduates who transfer to Florida public universities



	2009	2010	2011	2012	2013
<b>NFCC Students</b>	2.93	2.95	2.86	2.93	2.90
<b>State average</b>	2.93	2.92	2.91	2.93	2.94

Source: Articulation Report Table 12

# Top Universities Receiving NFCC Graduates

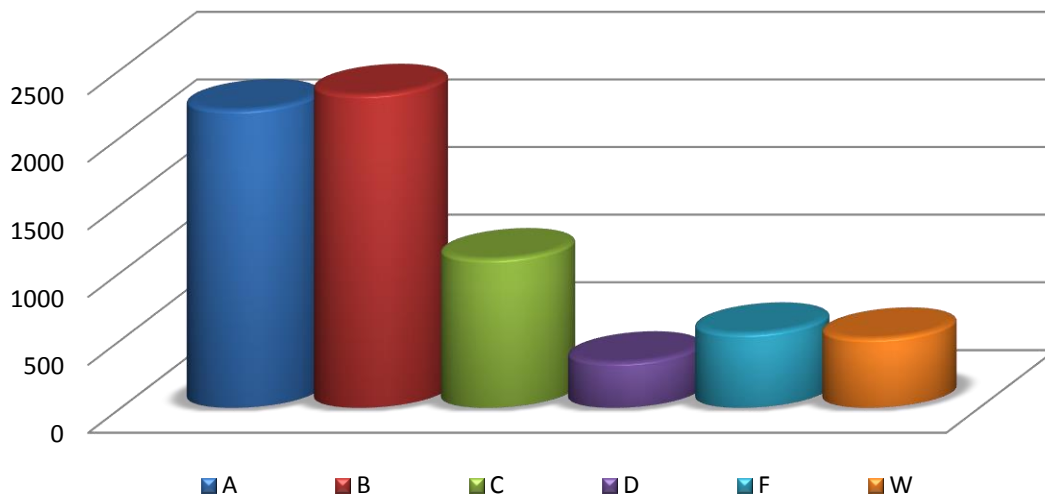
University	Avg GPA
FAMU - Tallahassee	2.81
FAU - Boca Raton	3.14
FIU - Miami	2.00
FSU - Tallahassee	3.06
UCF - Orlando	3.34
UF - Gainesville	3.16
UNF - Jacksonville	2.77
USF - Miami	3.05
UWF - Pensacola	2.75

Source: Articulation Report Table 12

# Grade Distribution

## All Courses 2014-2015

A	B	C	D	F	W	WF	Z	Total
2200	2313	1098	336	549	512	167	8	7183
31%	32%	15%	5%	8%	7%	2%	0%	



## College Credit Courses 2014-2015

A	B	C	D	F	W	WF	Z	Total
1808	1931	1004	325	482	464	160	8	6182
29%	31%	16%	5%	8%	8%	3%	0%	

## College Prep Courses 2014-2015

A	B	C	D	F	W	WF	Z	Total
34	63	47	10	21	12	0	0	187
18%	34%	25%	5%	11%	6%	0%	0%	

## PSAV Courses 2014-2015

<b>A</b>	<b>B</b>	<b>C</b>	<b>D</b>	<b>F</b>	<b>W</b>	<b>WF</b>	<b>Z</b>	<b>Total</b>
358	319	47	1	46	24	7	0	802
45%	40%	6%	0%	6%	3%	1%	0%	

## Online Courses 2014-2015

<b>A</b>	<b>B</b>	<b>C</b>	<b>D</b>	<b>F</b>	<b>W</b>	<b>WF</b>	<b>Z</b>	<b>Total</b>
413	401	243	78	132	127	55	2	1451
28%	28%	17%	5%	9%	9%	4%	0%	



# NFCC

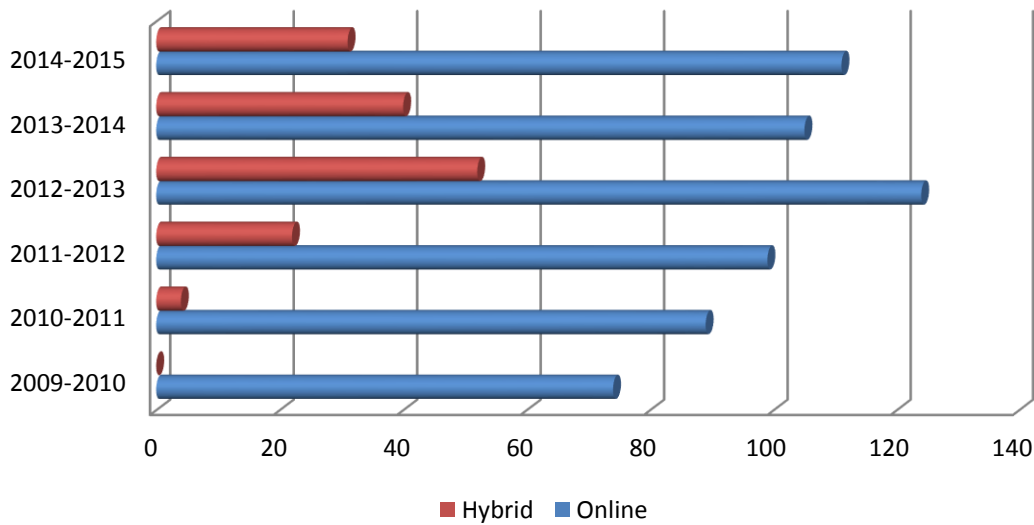
## *Distance Learning*



# Number of Online Courses

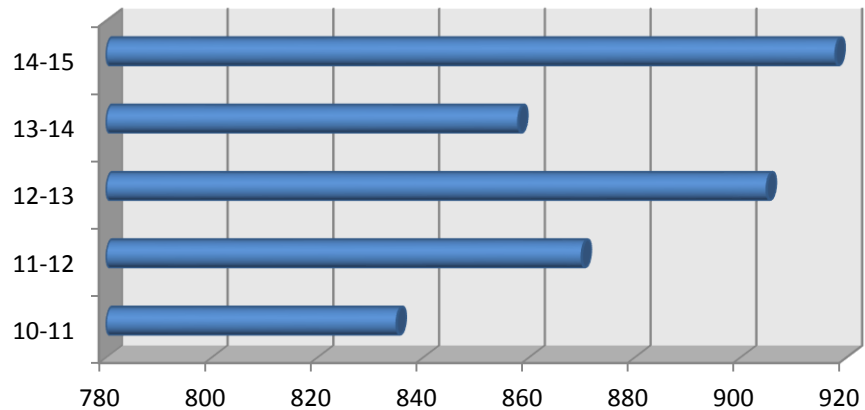
## 2014-2015

Year	Online	Hybrid
2009-2010	74	0
2010-2011	89	4
2011-2012	99	22
2012-2013	124	52
2013-2014	105	40
2014-2015	111	31



# Number of Online Students

Year	# of Students
08-09	728
09-10	787
10-11	835
11-12	870
12-13	905
13-14	858
14-15	918

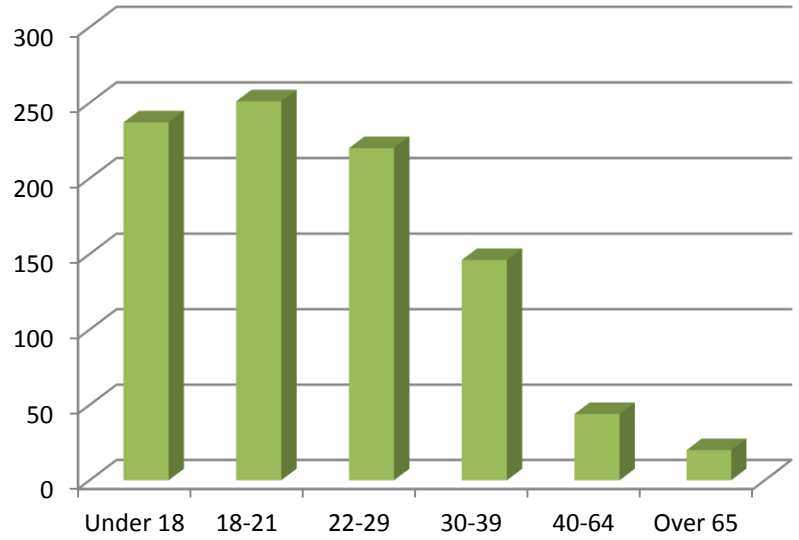
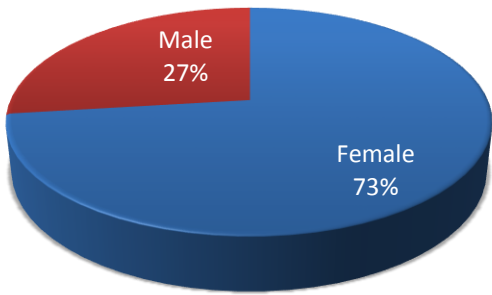


# Online Student Demographics

## 2014-2015

### Gender

<b>Female</b>	670
<b>Male</b>	247

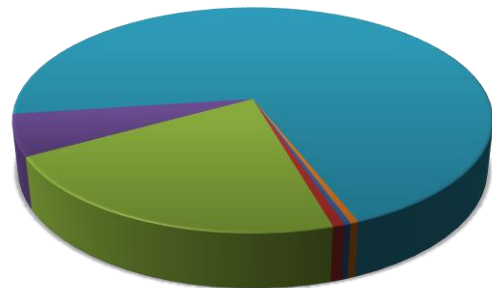


### Age

Under 18	18-21	22-29	30-39	40-64	Over 65
237	251	220	146	44	20

### Ethnicity

<b>American Indian/Alaska Native:</b>	3
<b>Asian:</b>	5
<b>Black:</b>	206
<b>Hispanic:</b>	51
<b>White:</b>	650
<b>Not Reported:</b>	3



- American India/Alaskan Native
- Asian
- Black
- Hispanic
- White
- Not Reported





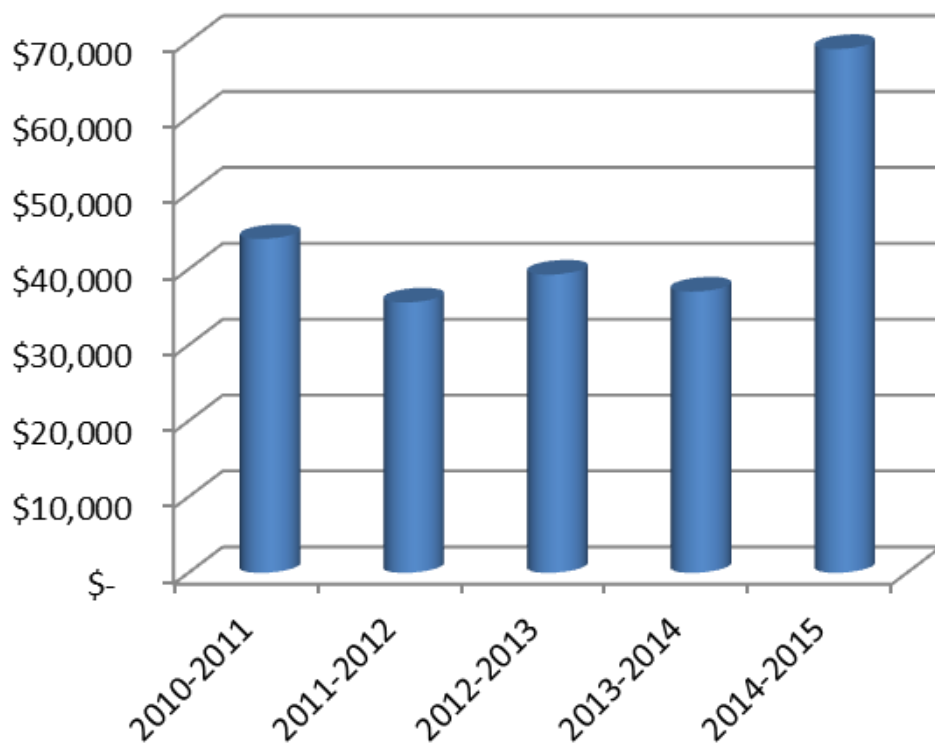
# NFCC

## *Dual Enrollment*

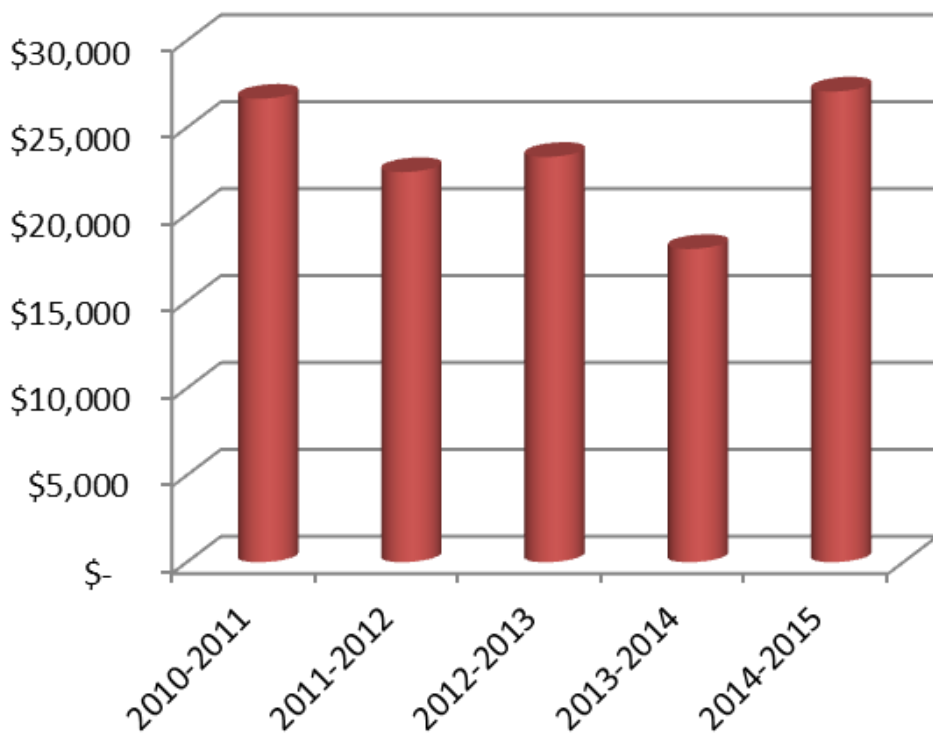


# Number and Cost of Dual Enrolled Student

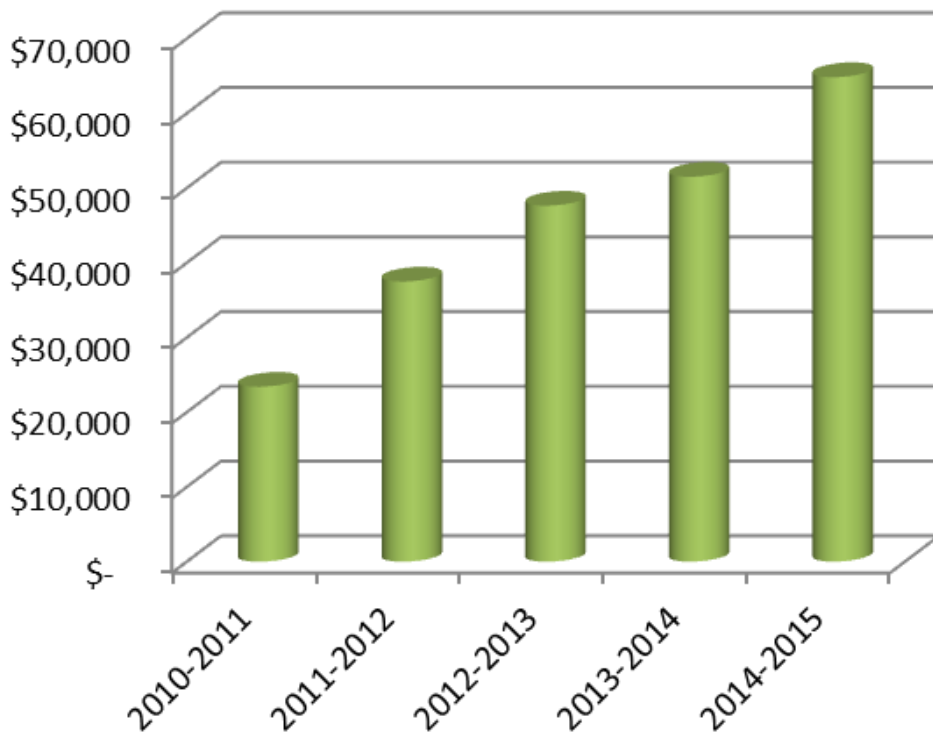
Hamilton					
	# of Students	Credit hours	County Value	Total NFCC DE Value	% Total DE Value
2010-2011	37	500	\$ 44,000	\$ 300,754	15%
2011-2012	30	381	\$ 35,624	\$ 299,668	12%
2012-2013	42	386	\$ 39,295	\$ 341,946	11%
2013-2014	40	364	\$ 37,055	\$ 354,060	10%
2014-2015	49	678	\$ 69,020	\$ 470,825	15%
5 Yr. Total	198	2309	\$224,994	\$ 1,767,253	



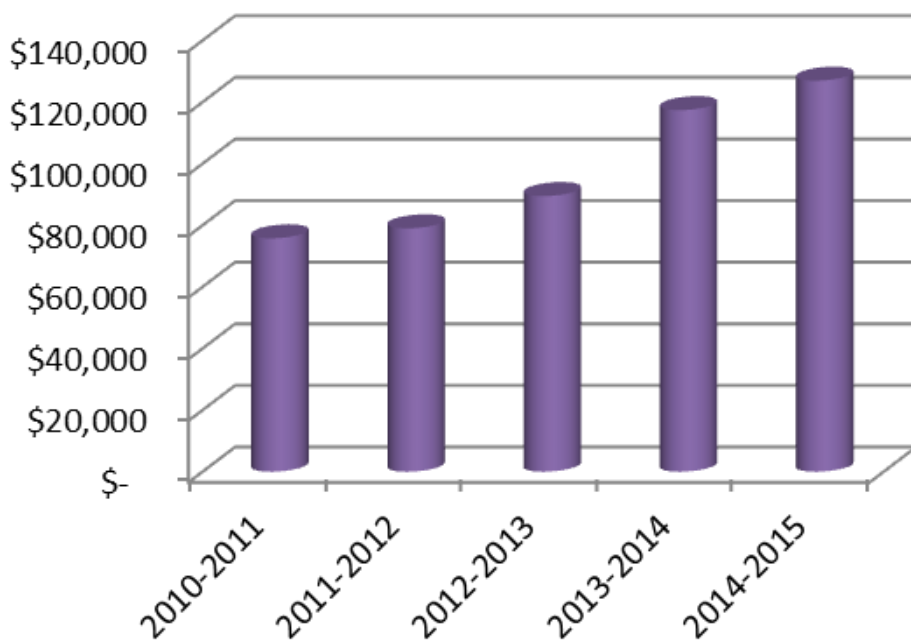
Jefferson					
	# of Students	Credit hours	County Value	Total NFCC DE Value	% Total DE Value
<b>2010-2011</b>	40	303	\$ 26,664	\$ 300,754	9%
<b>2011-2012</b>	22	240	\$ 22,440	\$ 299,668	7%
<b>2012-2013</b>	21	229	\$ 23,312	\$ 341,946	7%
<b>2013-2014</b>	21	177	\$ 18,019	\$ 354,060	5%
<b>2014-2015</b>	22	266	\$ 27,079	\$ 470,825	6%
<b>5 Yr. Total</b>	126	1215	\$ 117,514	\$ 1,767,253	



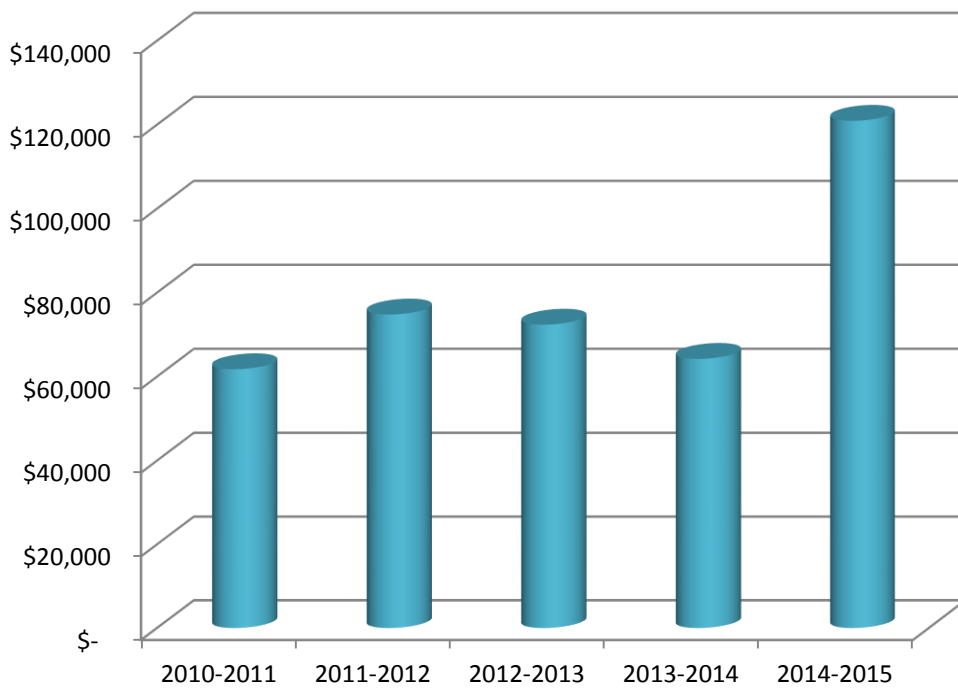
Lafayette					
	# of Students	Credit hours	County Value	Total NFCC DE Value	% Total DE Value
2010-2011	33	266	\$ 23,408	\$ 300,754	8%
2011-2012	40	401	\$ 37,494	\$ 299,668	13%
2012-2013	46	468	\$ 47,642	\$ 341,946	14%
2013-2014	43	506	\$ 51,511	\$ 354,060	15%
2014-2015	52	637	\$ 64,847	\$ 470,825	14%
5 Yr. Total	214	2278	\$224,902	\$ 1,767,253	



Madison					
	# of Students	Credit hours	County Value	Total NFCC DE Value	% Total DE Value
<b>2010-2011</b>	65	861	\$ 75,768	\$ 300,754	25%
<b>2011-2012</b>	67	845	\$ 79,008	\$ 299,668	26%
<b>2012-2013</b>	79	879	\$ 89,482	\$ 341,946	26%
<b>2013-2014</b>	88	1153	\$ 117,375	\$ 354,060	33%
<b>2014-2015</b>	97	1247	\$ 126,945	\$ 470,825	27%
<b>5 Yr. Total</b>	396	4985	\$ 488,578	\$ 1,767,253	

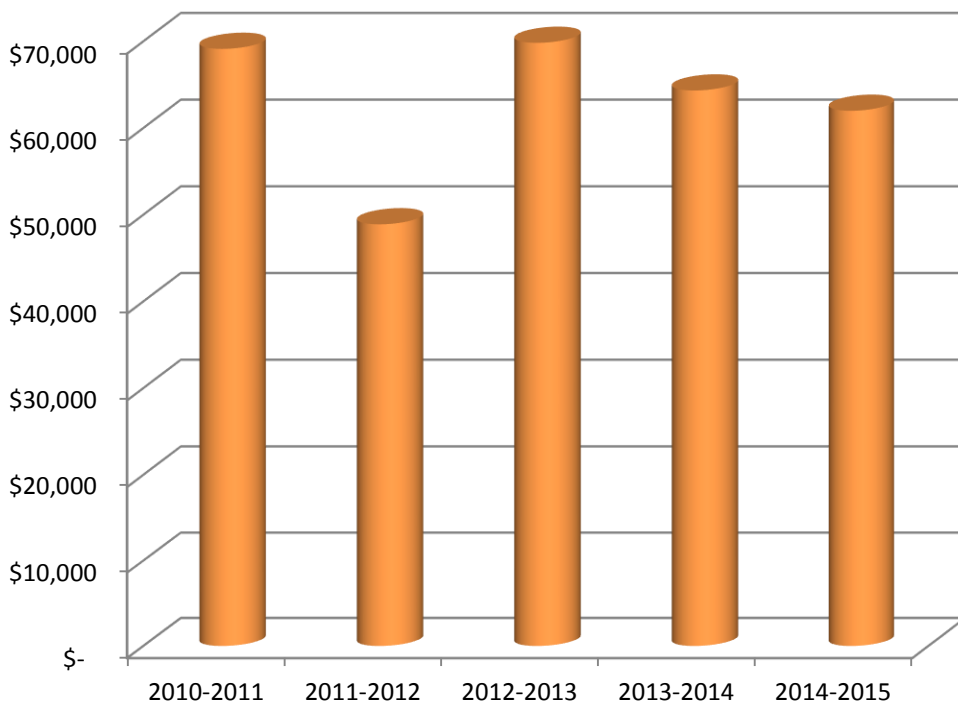


Suwannee					
	# of Students	Credit hours	County Value	Total NFCC DE Value	% Total DE Value
<b>2010-2011</b>	64	702	\$ 61,776	\$ 300,754	21%
<b>2011-2012</b>	78	800	\$ 74,800	\$ 299,668	25%
<b>2012-2013</b>	68	711	\$ 72,380	\$ 341,946	21%
<b>2013-2014</b>	82	631	\$ 64,236	\$ 354,060	18%
<b>2014-2015</b>	139	1188	\$ 120,938	\$ 470,825	26%
<b>5 Yr. Total</b>	431	4032	\$ 394,130	\$ 1,767,253	





Taylor					
	# of Students	Credit hours	County Value	Total NFCC DE Value	% Total DE Value
<b>2010-2011</b>	67	786	\$ 69,138	\$ 300,754	23%
<b>2011-2012</b>	46	523	\$ 48,901	\$ 299,668	16%
<b>2012-2013</b>	53	686	\$ 69,835	\$ 341,946	20%
<b>2013-2014</b>	41	632	\$ 64,338	\$ 354,060	18%
<b>2014-2015</b>	55	609	\$ 61,996	\$ 470,825	13%
<b>5 Yr. Total</b>	262	3236	\$314,207	\$ 1,767,253	



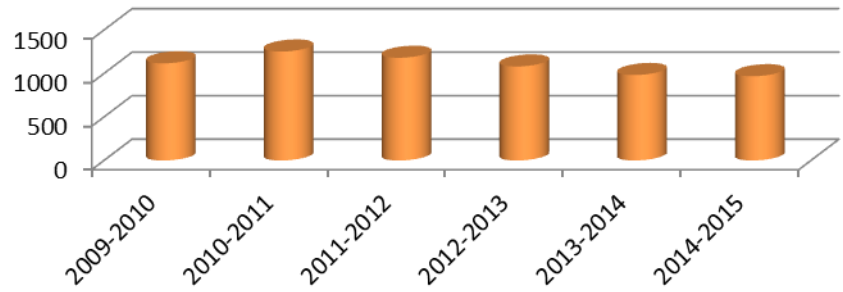
# NFCC

## *Financial Aid*



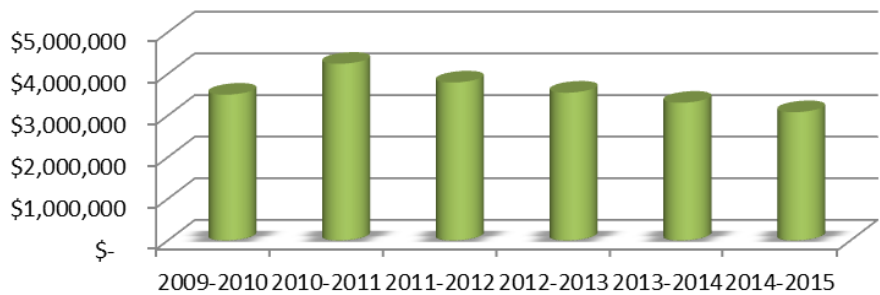
## Number of Financial Aid Awards

Number of Awards	
2009-2010	1117
2010-2011	1253
2011-2012	1181
2012-2013	1081
2013-2014	983
2014-2015	969



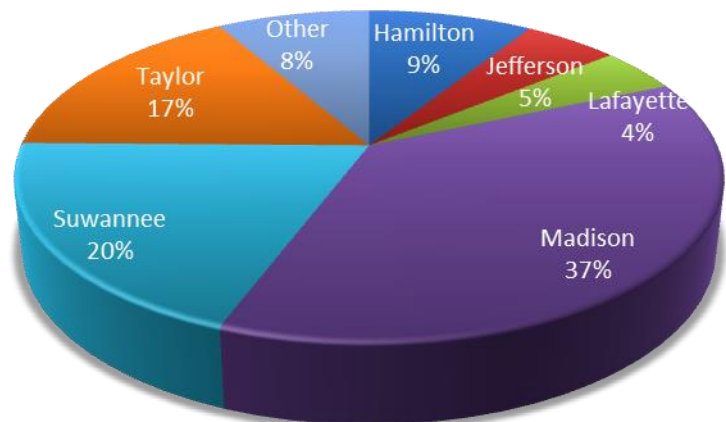
## Dollar Amount of Financial Aid Awards

Dollar Amt of Awards	
2009-2010	\$ 3,501,192
2010-2011	\$ 4,243,146
2011-2012	\$ 3,794,543
2012-2013	\$ 3,549,951
2013-2014	\$ 3,308,165
2014-2015	\$ 3,081,179



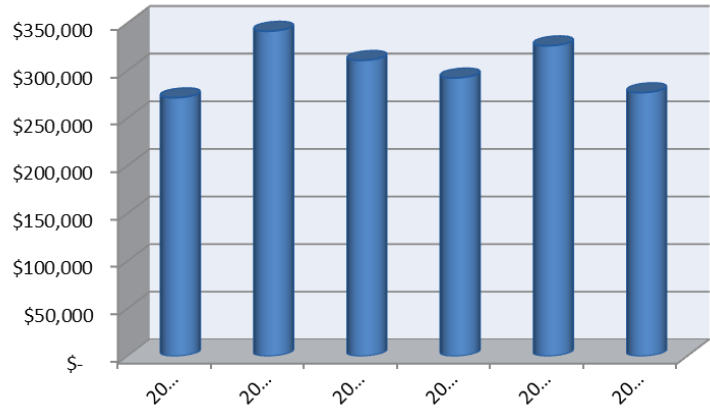
## Distribution by County

By County	
Hamilton	\$ 276,802
Jefferson	\$ 158,947
Lafayette	\$ 133,740
Madison	\$ 1,149,046
Suwannee	\$ 599,893
Taylor	\$ 505,031
Other	\$ 257,720
<b>Total</b>	<b>\$ 3,081,179</b>

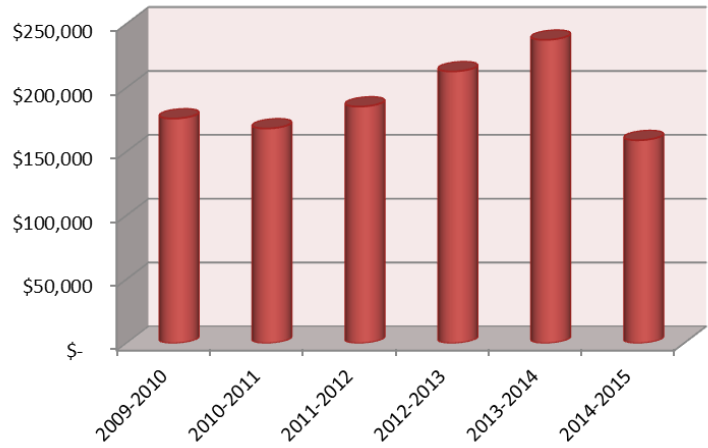


# Awards by County

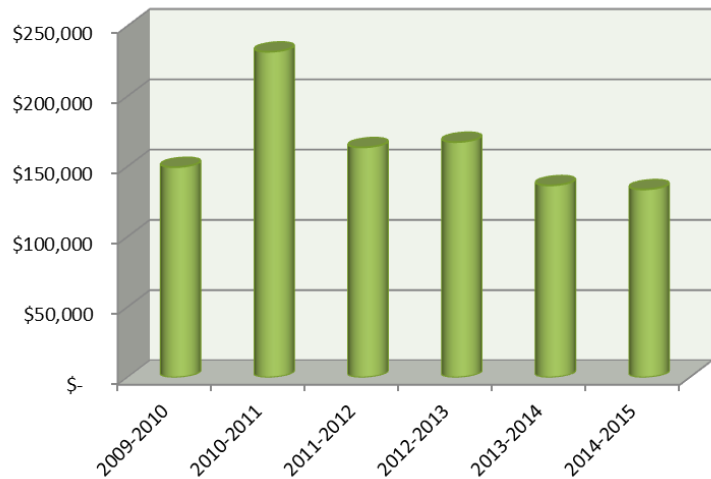
Hamilton		
	# of Students	Awards Paid
2009-2010	91	\$ 271,452
2010-2011	100	\$ 341,311
2011-2012	92	\$ 310,662
2012-2013	92	\$ 292,243
2013-2014	90	\$ 326,055
2014-2015	87	\$ 276,802



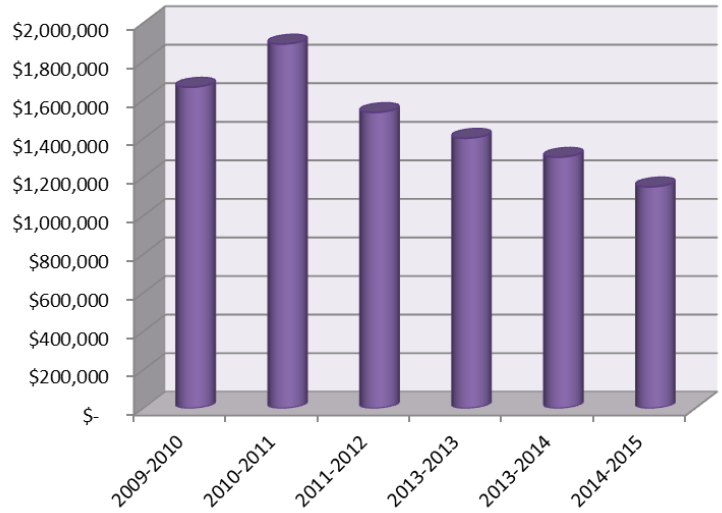
Jefferson		
	# of Students	Awards Paid
2009-2010	60	\$ 175,920
2010-2011	58	\$ 168,150
2011-2012	66	\$ 185,296
2012-2013	70	\$ 212,836
2013-2014	71	\$ 237,528
2014-2015	57	\$ 158,947



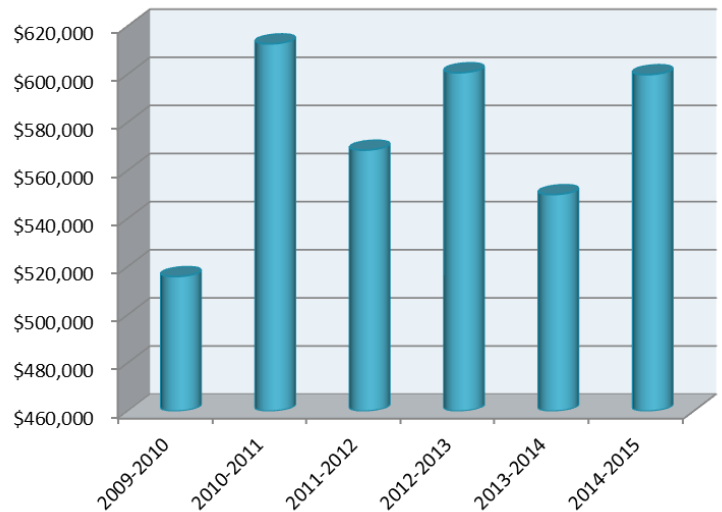
Lafayette		
	# of Students	Awards Paid
2009-2010	46	\$ 149,573
2010-2011	68	\$ 231,694
2011-2012	51	\$ 163,660
2012-2013	46	\$ 167,442
2013-2014	40	\$ 136,596
2014-2015	45	\$ 133,740



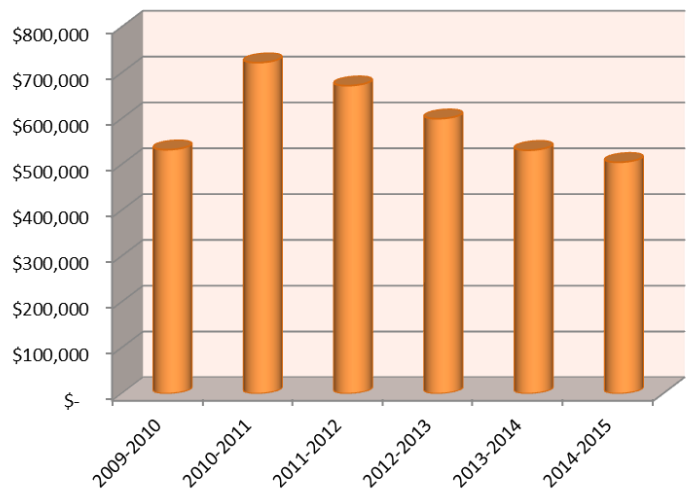
<b>Madison</b>		
	<b># of Students</b>	<b>Awards Paid</b>
<b>2009-2010</b>	516	\$ 1,666,185
<b>2010-2011</b>	539	\$ 1,889,842
<b>2011-2012</b>	501	\$ 1,534,922
<b>2013-2013</b>	427	\$ 1,401,654
<b>2013-2014</b>	392	\$ 1,302,902
<b>2014-2015</b>	368	\$ 1,149,046



<b>Suwannee</b>		
	<b># of Students</b>	<b>Awards Paid</b>
<b>2009-2010</b>	164	\$ 515,958
<b>2010-2011</b>	177	\$ 612,692
<b>2011-2012</b>	164	\$ 568,508
<b>2012-2013</b>	174	\$ 600,683
<b>2013-2014</b>	159	\$ 550,029
<b>2014-2015</b>	183	\$ 599,893



<b>Taylor</b>		
	<b># of Students</b>	<b>Awards Paid</b>
<b>2009-2010</b>	169	\$ 532,456
<b>2010-2011</b>	216	\$ 722,461
<b>2011-2012</b>	208	\$ 672,185
<b>2012-2013</b>	191	\$ 600,042
<b>2013-2014</b>	171	\$ 531,234
<b>2014-2015</b>	165	\$ 505,031







# NFCC

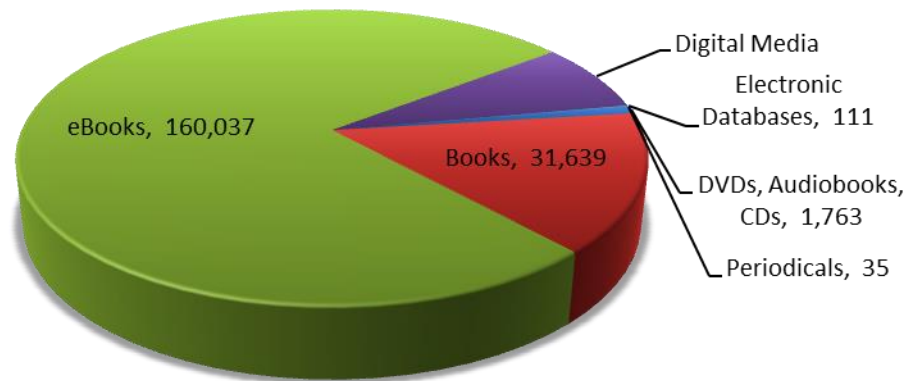
*The Library*





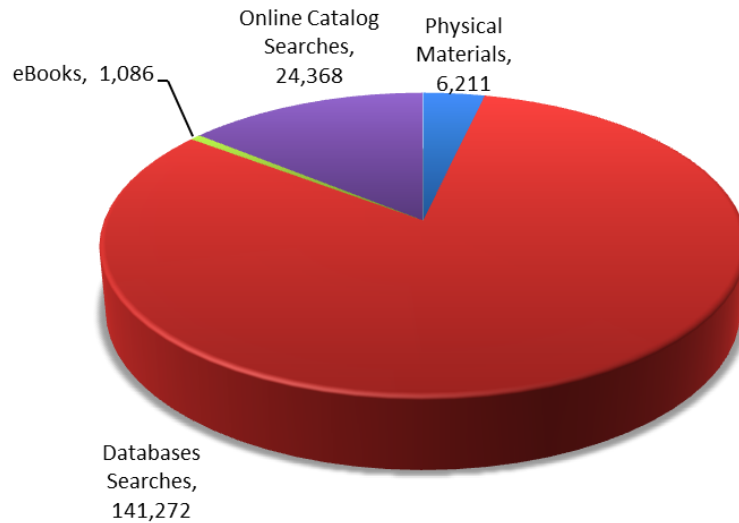
# Collections

Collection	2013-2014	2014-2015
DVDs, Audiobooks, CDs	1,699	1,763
Books	35,453	31,639
eBooks	58,767	160,037
Digital Media	14,052	15,847
Electronic Databases	128	111
Periodicals	35	35
<b>Total</b>	<b>110,134</b>	<b>209,432</b>



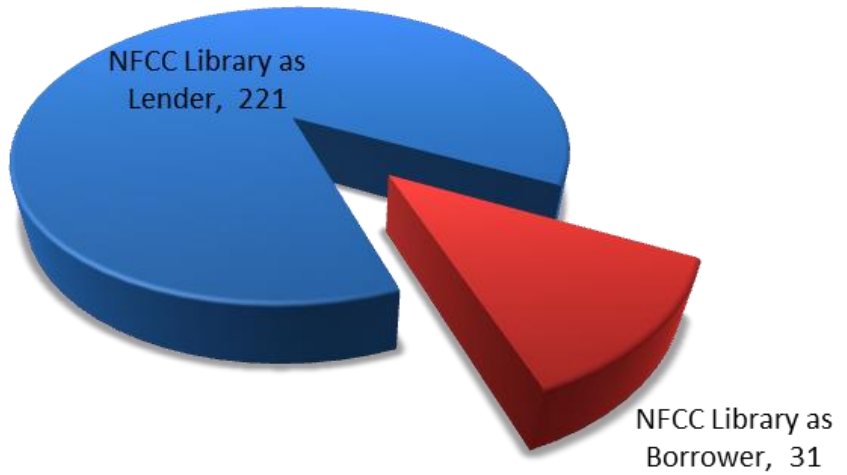
# Circulation Statistics

Circulation Statistics	2013-2014	2014-2015
Physical Materials	4,051	6,211
Databases Searches	68,963	141,272
eBooks	694	1,086
Online Catalog Searches	23,138	24,368
Gate Count	36,787	34,295
<b>Total</b>	<b>133,633</b>	<b>207,232</b>



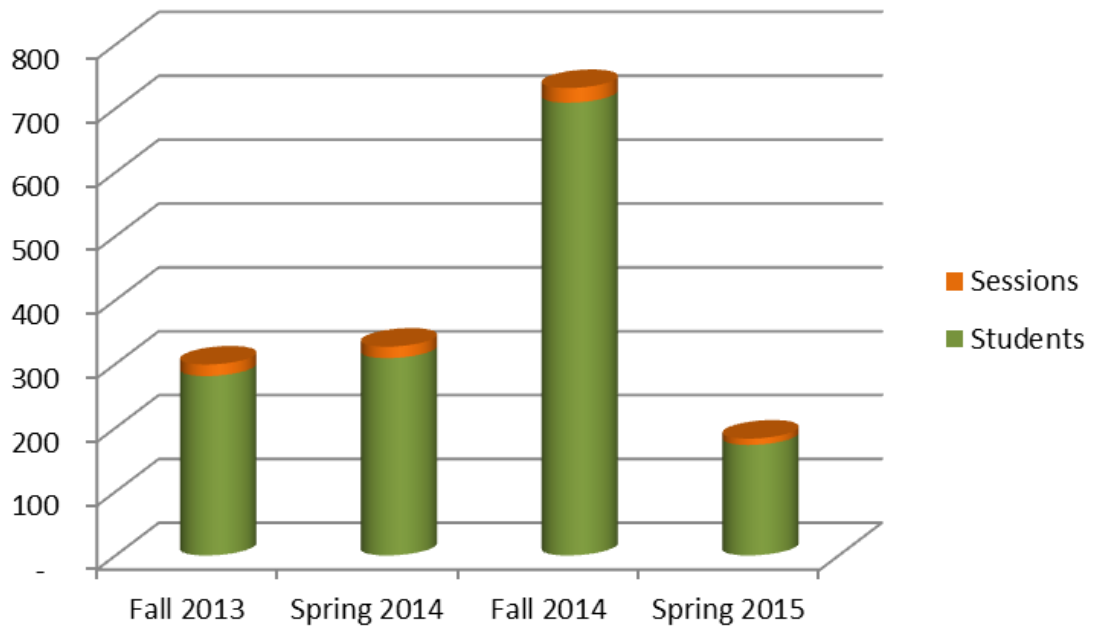
# Interlibrary Loan Statistics

Interlibrary Loan	2013-2014	2014-2015
NFCC Library as Lender	221	219
NFCC Library as Borrower	31	18



# Orientation Sessions

Orientation Sessions Provided	Fall 2013	Spring 2014	Fall 2014	Spring 2015
Students	281	309	709	173
Sessions	18	18	23	10





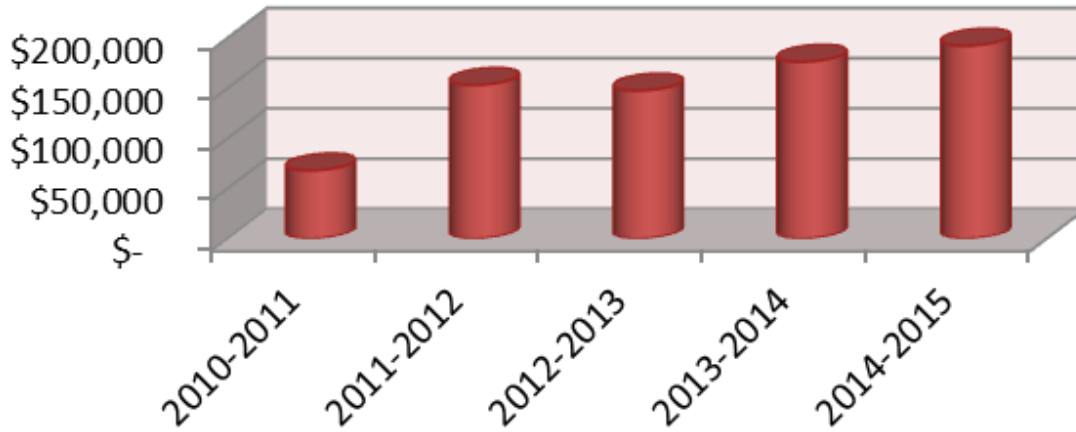
# NFCC

*The Foundation*



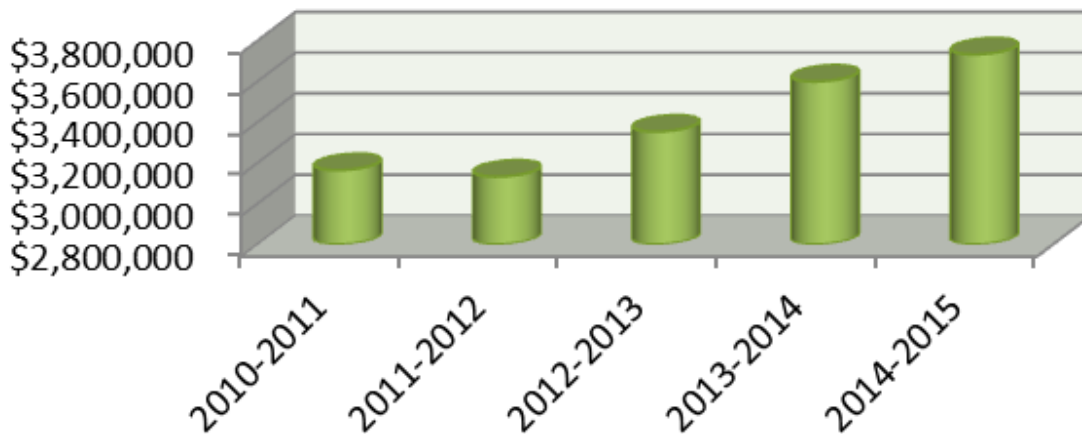
## Scholarships Awarded

2009-2010	2010-2011	2011-2012	2012-2013	2013-2014	2014-2015
\$ 104,843	\$ 67,830	\$ 153,013	\$ 147,419	\$ 176,150	\$ 192,180



## Foundation Assets

2009-2010	2010-2011	2011-2012	2012-2013	2013-2014	2014-2015
\$ 2,760,800	\$ 3,164,631	\$ 3,132,899	\$ 3,353,846	\$ 3,600,000	\$ 3,733,387







# NFCC

*Faculty and Staff*



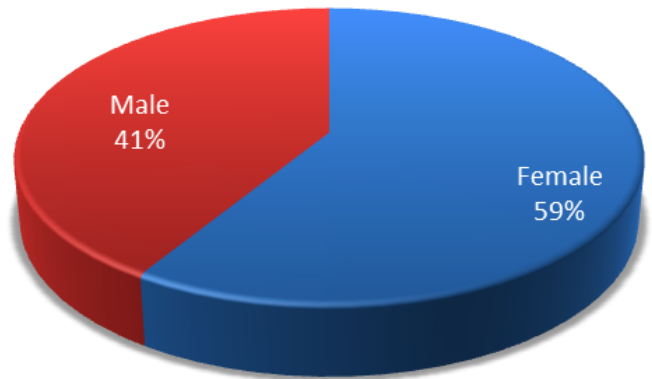
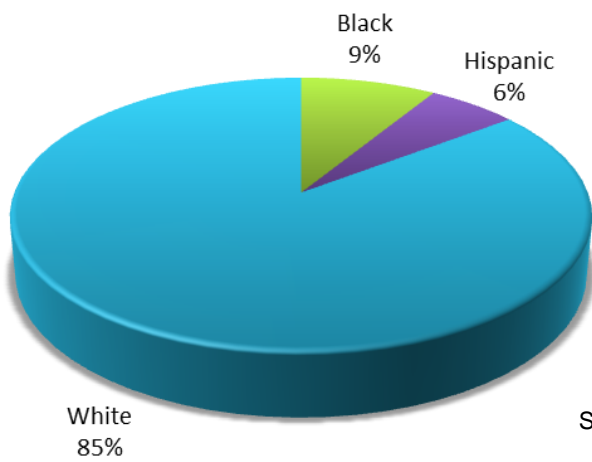


# Full-Time Faculty

2014-2015

## By Gender & Ethnicity

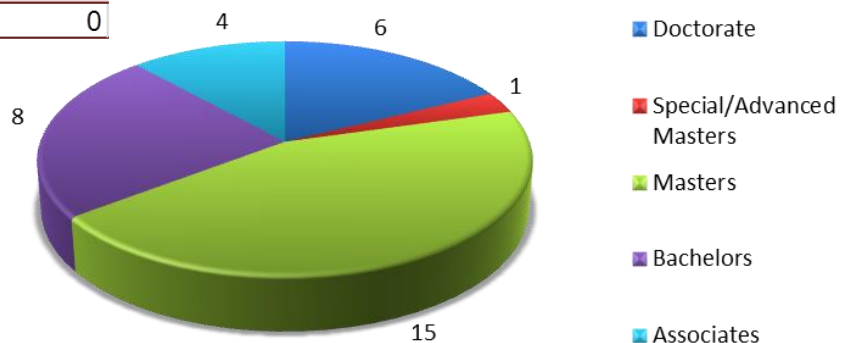
Full-Time Faculty	Female	Male	Total
American Indian	0	0	0
Asian	0	0	0
Black	1	2	3
Hispanic	0	2	2
White	19	10	29
<b>Total</b>	<b>20</b>	<b>14</b>	<b>34</b>



Source: Florida College System, 2014 IPEDS Human Resource Survey, Part A

## By Degree

Full-Time Faculty	
Doctorate	6
Special/Advanced Masters	1
Masters	15
Bachelors	8
Associates	4
Less than Associates	0
Other	0
Unknown	0



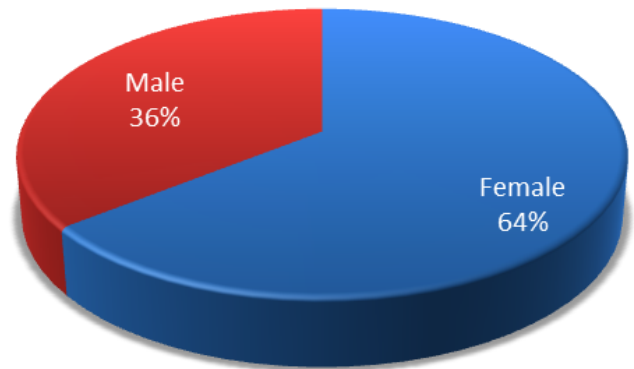
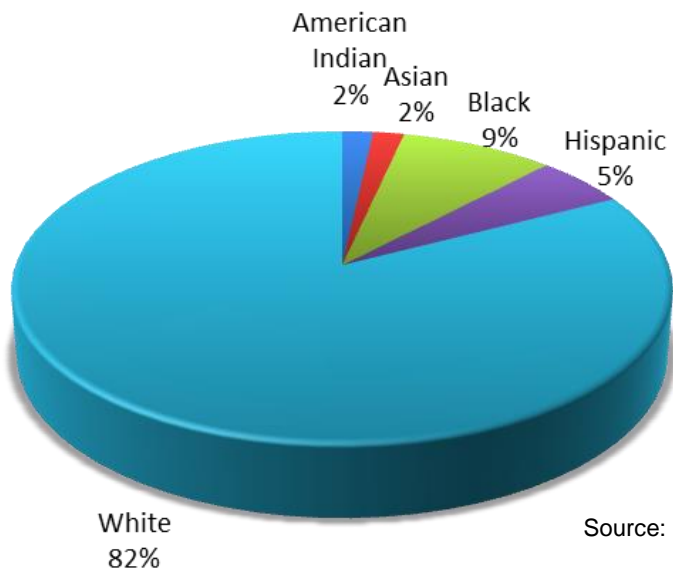
Source: Florida College System, The Fact Book, Table 18

# Full-Time Staff

2014-2015

By Gender & Ethnicity

Full-Time Staff	Female	Male	Total
American Indian	1	1	2
Asian	1	1	2
Black	6	4	10
Hispanic	3	3	6
White	63	32	95
<b>Total</b>	<b>74</b>	<b>41</b>	<b>115</b>

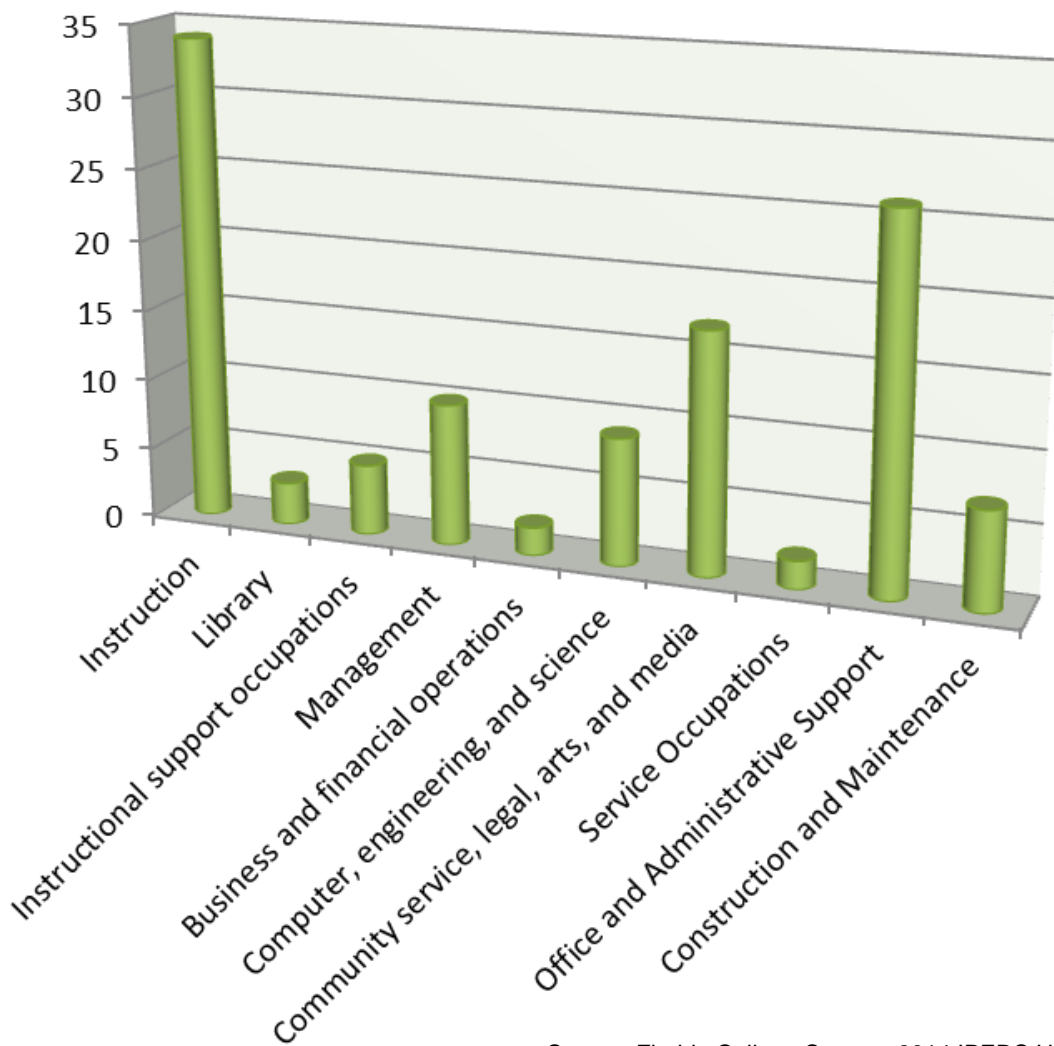


Source: Florida College System, 2014 IPEDS Human Resource Survey, Part B

# Full-Time Faculty and Staff

## By Occupation

Full-Time Faculty and Staff by Occupation	
Instruction	34
Library	3
Instructional support occupations	5
Management	10
Business and financial operations	2
Computer, engineering, and science	9
Community service, legal, arts, and media	17
Service Occupations	2
Office and Administrative Support	26
Construction and Maintenance	7
<b>Total</b>	<b>115</b>



Source: Florida College System, 2014 IPEDS Human Resource Survey, Part B





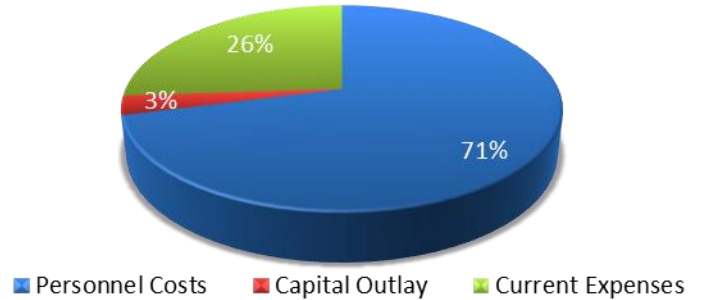
# NFCC

*Finances*

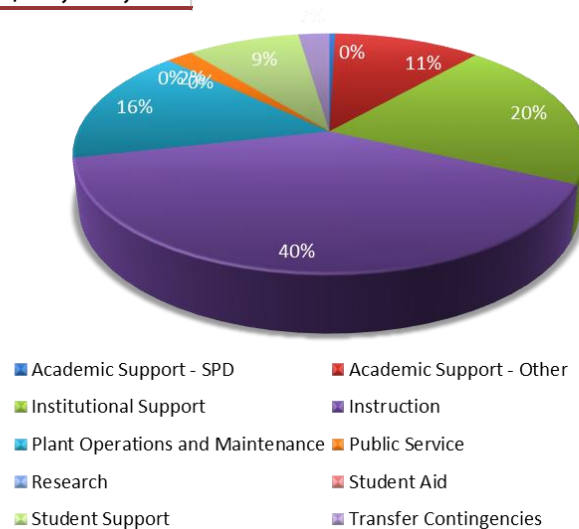


# General Fund Budget

By Object		
	2014-2015	2015-2016
Personnel Costs	\$7,024,650	\$7,308,222
Capital Outlay	\$ 85,316	\$308,879
Current Expenses	\$2,671,500	\$2,681,816
<b>Total</b>	<b>\$9,781,466</b>	<b>\$10,298,917</b>



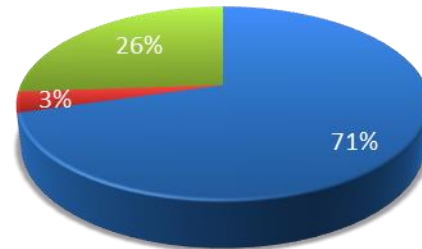
By Organizational Unit		
	2014-2015	2015-2016
Academic Support - SPD	\$44,313	\$44,313
Academic Support - Other	\$1,202,697	\$1,142,173
Institutional Support	\$2,042,152	\$2,105,441
Instruction	\$3,614,795	\$4,070,484
Plant Operations and Maintenance	\$1,581,052	\$1,610,499
Public Service	\$214,325	\$208,911
Research	\$0	\$0
Student Aid	\$0	\$0
Student Support	\$877,821.00	\$875,246.00
Transfer Contingencies	\$204,311	\$241,850
<b>Total</b>	<b>\$9,781,466</b>	<b>\$10,298,917</b>





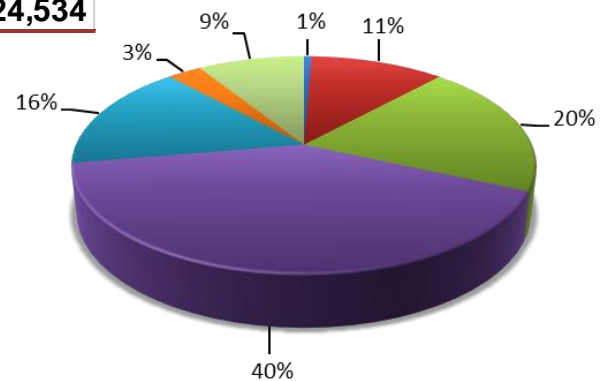
# General Fund Expenditures

By Object		
	2013-2014	2014-2015
Personnel Costs	\$6,301,080	\$6,640,921
Capital Outlay	\$574,118	\$323,590
Current Expenses	\$4,287,984	\$2,460,023
<b>Total</b>	<b>\$11,163,182</b>	<b>\$9,424,534</b>



■ Personnel Costs ■ Capital Outlay ■ Current Expenses

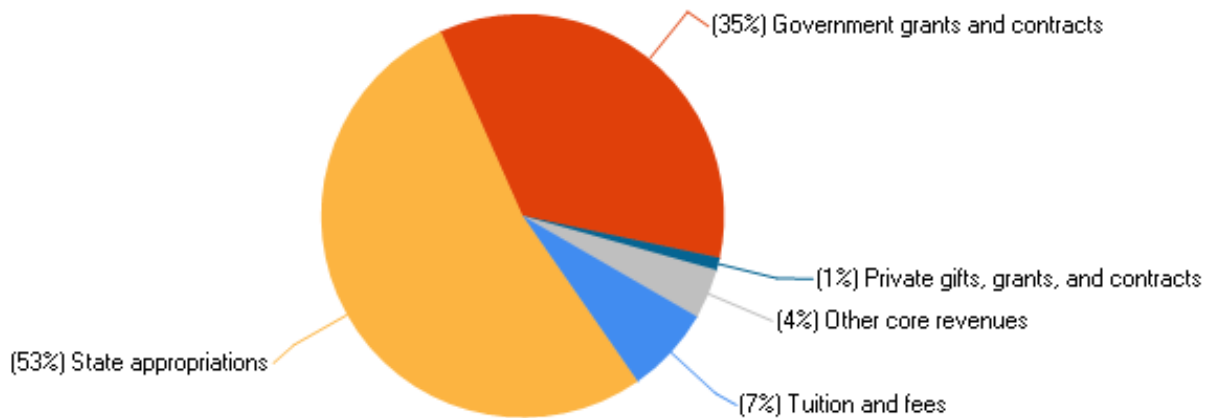
By Organizational Unit		
	2013-2014	2014-2015
Academic Support - SPD	\$53,354	\$59,203
Academic Support - Other	\$1,419,933	\$1,055,249
Institutional Support	\$1,907,474	\$1,878,805
Instruction	\$5,265,285	\$3,820,727
Plant Operations and Maintenance	\$1,467,060	\$1,503,145
Public Service	\$231,044	\$267,938
Research	\$579	\$0
Student Aid	\$52,130	\$0
Student Support	\$764,309	\$839,468
Transfer Contingencies	\$2,014	\$0
<b>Total</b>	<b>\$11,163,182</b>	<b>\$9,424,534</b>



■ Academic Support - SPD ■ Academic Support - Other  
 ■ Institutional Support ■ Instruction  
 ■ Plant Operations and Maintenance ■ Public Service  
 ■ Research ■ Student Aid  
 ■ Student Support ■ Transfer Contingencies

# Percent Distribution of Core Revenues

Fiscal year 2013



IPEDS Data Institutional Profile 2013-2014

# Core Revenues per FTE Enrollment

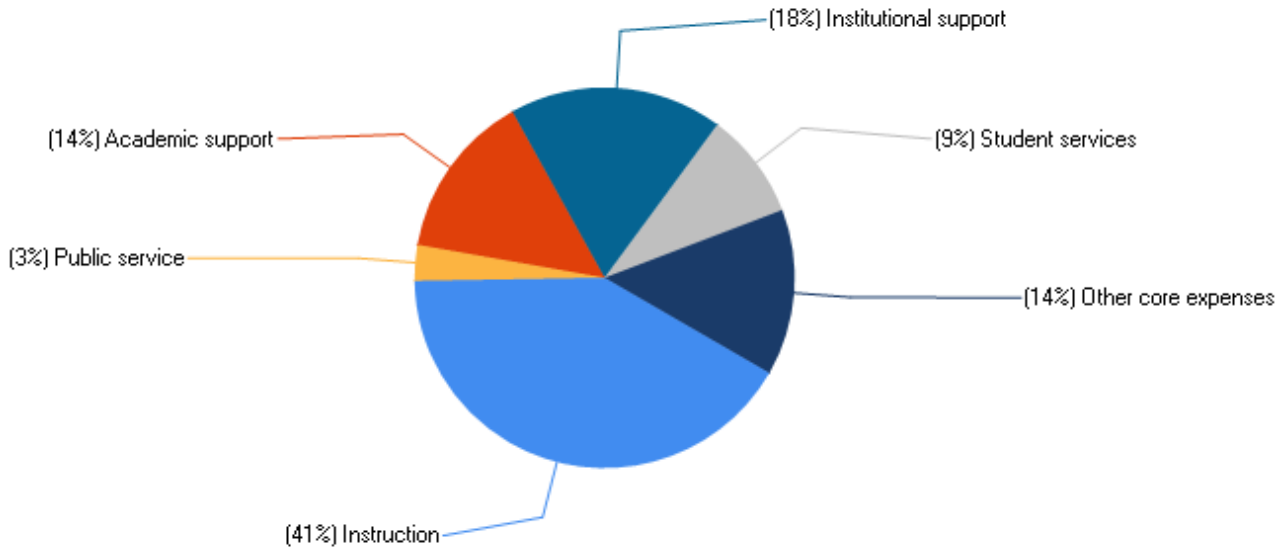
Fiscal year 2013

Tuition and Fees	\$83
State Appropriations	\$6818
Local Appropriations	\$0
Government Grants and Contracts	\$44594
Private Gifts, Grants and Contracts	\$166
Investment Return	\$14
Other Core Revenues	\$477

IPEDS Data Institutional Profile 2013-2014

# Percent Distribution of Core Expenses

Fiscal year 2013



IPEDS Data Institutional Profile 2013-2014

# Core Expenses per FTE Enrollment

Fiscal year 2013

Instruction	\$5,510
Research	\$0
Public Service	\$408
Academic Support	\$1,858
Institutional Support	\$2,348
Student Services	\$1,258
Other Core Expenses	\$1,910

IPEDS Data Institutional Profile 2013-2014



# NFCC

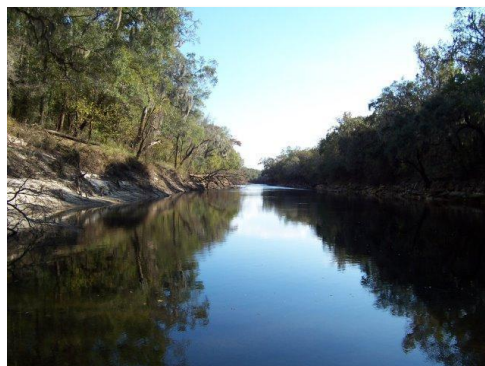
*The District*



# Hamilton County

Quick Facts	Hamilton County	Florida
Population, 2013	14,354	19,600,311
Persons under 18 years, 2013	19.0%	20.6%
White, 2013	62.6%	78.1%
Black or African American, 2013	33.9%	16.7%
American Indian and Alaska Native, 2013	0.9%	0.5%
Asian, 2013	0.8%	2.7%
Native Hawaiian and Other Pacific Islander, 2013		0.1%
Two More Races, 2013	1.8%	1.9%
Hispanic or Latino, 2013	9.3%	23.6%
White, not Hispanic or Latino, 2013	54.8%	56.4%
High school graduate or higher, % of persons 25+, 2009-2013	75.1%	86.1%
Bachelor's degree or higher, % of persons 25+, 2009-2013	9.4%	26.4%
Per capita money income in past 12 months, 2009-2013	\$16,295	\$26,236
Median household income, 2009-2013	\$37,716	\$46,956
Persons below poverty level, 2009-2013	23.6%	16.3%
Land area in square miles, 2010	513.79	53624.76
Persons per square mile, 2010	28.8	350.6

Source: U.S. Census Bureau: State and County QuickFacts: 02/11/2015



# Jefferson County

Quick Facts	Jefferson County	Florida
Population, 2013	14,194	19,600,311
Persons under 18 years, 2013	17.5%	20.6%
White, 2013	62.0%	78.1%
Black or African American, 2013	35.6%	16.7%
American Indian and Alaska Native, 2013	0.4%	0.5%
Asian, 2013	0.4%	2.7%
Native Hawaiian and Other Pacific Islander, 2013		0.1%
Two More Races, 2013	1.5%	1.9%
Hispanic or Latino, 2013	4.1%	23.6%
White, not Hispanic or Latino, 2013	58.7%	56.4%
High school graduate or higher, % of persons 25+, 2009-2013	81.2%	86.1%
Bachelor's degree or higher, % of persons 25+, 2009-2013	16.9%	26.4%
Per capita money income in past 12 months, 2009-2013	\$21,184	\$26,236
Median household income, 2009-2013	\$44,170	\$46,956
Persons below poverty level, 2009-2013	17.2%	16.3%
Land area in square miles, 2010	598.1	53624.76
Persons per square mile, 2010	24.7	350.6

Source: U.S. Census Bureau: State and County QuickFacts: 02/11/2015

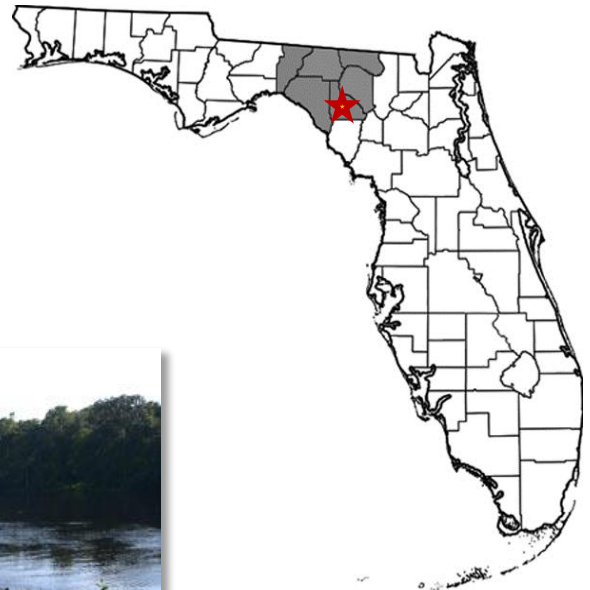




# Lafayette County

Quick Facts	Lafayette County	Florida
Population, 2013	8,848	19,600,311
Persons under 18 years, 2013	20.7%	20.6%
White, 2013	82.5%	78.1%
Black or African American, 2013	15.2%	16.7%
American Indian and Alaska Native, 2013	0.7%	0.5%
Asian, 2013	0.3%	2.7%
Native Hawaiian and Other Pacific Islander, 2013	0.1%	0.1%
Two More Races, 2013	1.3%	1.9%
Hispanic or Latino, 2013	12.6%	23.6%
White, not Hispanic or Latino, 2013	70.8%	56.4%
High school graduate or higher, % of persons 25+, 2009-2013	78.4%	86.1%
Bachelor's degree or higher, % of persons 25+, 2009-2013	9.3%	26.4%
Per capita money income in past 12 months, 2009-2013	\$18,660	\$26,236
Median household income, 2009-2013	\$39,722	\$46,956
Persons below poverty level, 2009-2013	20.2%	16.3%
Land area in square miles, 2010	543.41	53624.76
Persons per square mile, 2010	16.3	350.6

Source: U.S. Census Bureau: State and County QuickFacts: 02/11/2015





# Madison County

Quick Facts	Madison County	Florida
Population, 2013	18,728	19,600,311
Persons under 18 years, 2013	20.3%	20.6%
White, 2013	58.7%	78.1%
Black or African American, 2013	39.0%	16.7%
American Indian and Alaska Native, 2013	0.7%	0.5%
Asian, 2013	0.3%	2.7%
Native Hawaiian and Other Pacific Islander, 2013		0.1%
Two More Races, 2013	1.3%	1.9%
Hispanic or Latino, 2013	5.0%	23.6%
White, not Hispanic or Latino, 2013	54.5%	56.4%
High school graduate or higher, % of persons 25+, 2009-2013	78.2%	86.1%
Bachelor's degree or higher, % of persons 25+, 2009-2013	9.7%	26.4%
Per capita money income in past 12 months, 2009-2013	\$15,538	\$26,236
Median household income, 2009-2013	\$33,833	\$46,956
Persons below poverty level, 2009-2013	22.5%	16.3%
Land area in square miles, 2010	695.95	53624.76
Persons per square mile, 2010	27.6	350.6

Source: U.S. Census Bureau: State and County QuickFacts: 02/11/2015



# Suwannee County

Quick Facts	Suwannee County	Florida
Population, 2013	43,734	19,600,311
Persons under 18 years, 2013	21.4%	20.6%
White, 2013	83.7%	78.1%
Black or African American, 2013	13.4%	16.7%
American Indian and Alaska Native, 2013	0.7%	0.5%
Asian, 2013	0.7%	2.7%
Native Hawaiian and Other Pacific Islander, 2013	0.1%	0.1%
Two More Races, 2013	1.4%	1.9%
Hispanic or Latino, 2013	9.1%	23.6%
White, not Hispanic or Latino, 2013	75.5%	56.4%
High school graduate or higher, % of persons 25+, 2009-2013	79.8%	86.1%
Bachelor's degree or higher, % of persons 25+, 2009-2013	9.8%	26.4%
Per capita money income in past 12 months, 2009-2013	\$18,431	\$26,236
Median household income, 2009-2013	\$35,698	\$46,956
Persons below poverty level, 2009-2013	23.6%	16.3%
Land area in square miles, 2010	688.55	53624.76
Persons per square mile, 2010	60.3	350.6

Source: U.S. Census Bureau: State and County QuickFacts: 02/11/2015



# Taylor County

Quick Facts	Taylor County	Florida
Population, 2013	22,857	19,600,311
Persons under 18 years, 2013	19.0%	20.6%
White, 2013	75.8%	78.1%
Black or African American, 2013	20.9%	16.7%
American Indian and Alaska Native, 2013	0.9%	0.5%
Asian, 2013	0.8%	2.7%
Native Hawaiian and Other Pacific Islander, 2013		0.1%
Two More Races, 2013	1.7%	1.9%
Hispanic or Latino, 2013	3.9%	23.6%
White, not Hispanic or Latino, 2013	72.3%	56.4%
High school graduate or higher, % of persons 25+, 2009-2013	76.5%	86.1%
Bachelor's degree or higher, % of persons 25+, 2009-2013	11.6%	26.4%
Per capita money income in past 12 months, 2009-2013	\$17,045	\$26,236
Median household income, 2009-2013	\$36,356	\$46,956
Persons below poverty level, 2009-2013	16.7%	16.3%
Land area in square miles, 2010	1043.31	53624.76
Persons per square mile, 2010	21.6	350.6

Source: U.S. Census Bureau: State and County QuickFacts: 02/11/2015







# NFCC

## *Economic Impact*



# Business Perspective

## NFCC Raises Consumer Spending

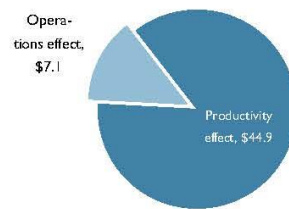


- NFCC employed 104 full-time and 55 part-time faculty and staff in the 2011-12 reporting year, with an annual payroll of \$6.5 million.
- In addition to payroll, NFCC spent \$5.8 million in FY 2011-12 for supplies and services, of which an estimated 41% was spent in the NFCC Service Area.

## NFCC Generates New Income

- NFCC payroll and spending for supplies and services generate a net impact of \$7.1 million in added income in the economy each year.
- The increased productivity of workers due to the accumulation of past and present NFCC skills in the NFCC Service Area workforce contributes approximately \$44.9 million in added income each year.

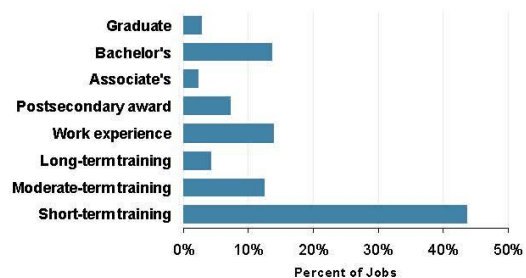
Added Income in NFCC Service Area Due to NFCC (\$ Millions)



## NFCC Creates a Skilled Workforce

- NFCC activities encourage new business, assist existing business, and create long-term economic growth. The college enhances worker skills and provides customized training to local business and industry.
- An estimated 514,200 NFCC credits have accumulated in the NFCC Service Area workforce over the past 29-year period as former NFCC students (completers and non-completers) enter the regional workforce each year.

Projected 2022 Jobs by Skill Level in NFCC Service Area (%)



EMSI is a leading provider of socioeconomic impact and strategic planning tools to community and technical colleges in the US and Canada. Visit us at [www.economicmodeling.com](http://www.economicmodeling.com) for more information. To see full documentation of the study, please contact the college.

MARCH 2013  
WWW.ECONOMICMODELING.COM  
866.999.3674



## NFCC Increases State Income



- The activities of NFCC’s 2011-12 student body will generate about \$3.8 million in labor income in the state economy each year.
- Once NFCC’s current students become active in the workforce, they will promote business output, raise consumer spending, and increase property income in the state. All of this contributes an additional \$1.8 million in taxable income each year.
- Altogether, higher student income and associated effects on business productivity add \$5.6 million in income annually to the state economy.

## NFCC Reduces Social Costs

- Education is statistically correlated with improved lifestyle behaviors, including reduced incidences of absenteeism, alcohol abuse, and smoking, lower probability of committing crime, and fewer welfare and unemployment claims.

### Annual Benefits to the Florida Public Due to NFCC (\$ Millions)



- It is estimated that NFCC’s 2011-12 student population will generate social savings to the Florida public equal to \$329,000 a year.
- These savings accrue to all state and local residents—students, homeowners, businesses, and taxpayers.



EMSI is a leading provider of socioeconomic impact and strategic planning tools to community and technical colleges in the US and Canada. Visit us at [www.economicmodeling.com](http://www.economicmodeling.com) for more information. To see full documentation of the study, please contact the college.

MARCH 2013  
WWW.ECONOMICMODELING.COM  
866.999.3674

**emsi**

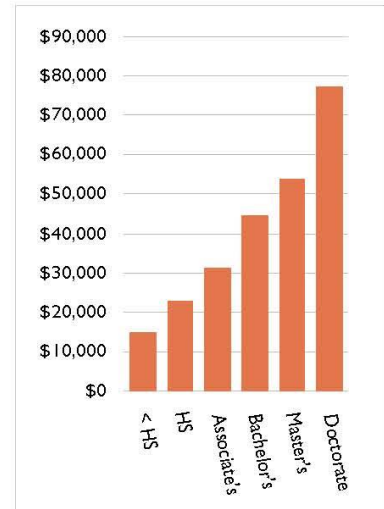
# Student Perspective

## Education Will Pay You Back—For a Lifetime



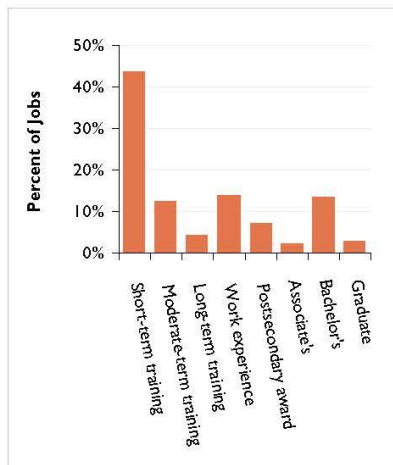
- Students enjoy an attractive 16.6% rate of return on their NFCC educational investment.
- Over the course of his or her working career, the average NFCC student's lifetime earnings will increase \$6.50 for every dollar invested in their NFCC education (in the form of tuition, fees, and forgone earnings).
- The average annual income of the typical associate's degree graduate in the NFCC Service Area at the midpoint of his or her career is \$31,100, 35% more than someone with a high school diploma.
- Over the course of a working lifetime, associate's degree graduates in the NFCC Service Area earn \$340,200 more than someone with a high school diploma (undiscounted).

Average Earnings in NFCC Service Area



## Education Is Your Ticket to a Better Job

Projected 2022 Jobs in NFCC Service Area by Skill Level



- By 2022 it is anticipated that there will be about 13,900 new and replacement jobs available in the NFCC Service Area.
- About 19% of these jobs will require an education level equal to an associate's degree or greater.
- Another 7% of available jobs in 2022 will require some kind of post-secondary certificate or vocational award.



EMSI is a leading provider of socioeconomic impact and strategic planning tools to community and technical colleges in the US and Canada. Visit us at [www.economicmodeling.com](http://www.economicmodeling.com) for more information. To see full documentation of the study, please contact the college.

MARCH 2013  
WWW.ECONOMICMODELING.COM  
866.999.3674





# Taxpayer Perspective

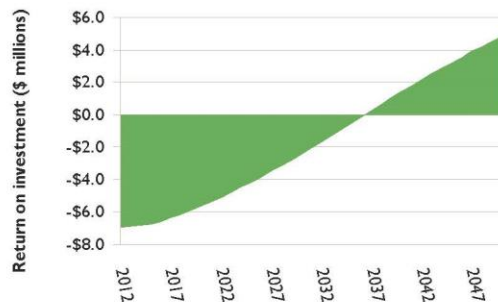
## NFCC Leverages Taxpayer Dollars

- An estimated 85% of NFCC students remain in Florida and contribute to economic growth. Students who enter the workforce expand the tax base by generating higher earnings and reducing social costs.
- Higher student earnings and associated increases in property income generate about \$627,300 in added tax revenue each year.
- State government will save approximately \$26,400 in avoided social costs each year, including savings associated with improved health, lower costs of law enforcement, and fewer welfare claimants.



## NFCC Generates a Return on Public Investment

*Long-term Return to State Taxpayers on their NFCC Investment*



- State government allocated about \$7 million in support of NFCC in FY 2011-12.
- For every dollar appropriated by state government to NFCC, taxpayers will see a return with a cumulative added value of \$1.70 in the form of higher tax revenues and avoided social costs.
- State government will receive a rate of return of 5.7% on their investments in NFCC.

EMSI is a leading provider of socioeconomic impact and strategic planning tools to community and technical colleges in the US and Canada. Visit us at [www.economicmodeling.com](http://www.economicmodeling.com) for more information. To see full documentation of the study, please contact the college.

MARCH 2013  
WWW.ECONOMICMODELING.COM  
866.999.3674





# NFCC

## *College Rankings*



# Washington Monthly 2013 Community College Rankings

1	Saint Paul College (MN)
2	North Florida Community College (FL)
3	North Dakota State College of Science (ND)
4	Wisconsin Indianhead Technical College (WI)
5	Lawson State Community College (AL)
6	Missouri State University-West Plains (M)
7	Western Wyoming Community College (WY)
8	Capital Area Technical College (LA)
9	Snow College (UT)
10	North Central Missouri College (MO)

Community College	Active & Collaborative Learning	Student Effort	Academic Challenge	Student-Faculty Interaction	Support for Learning	First-Year Retention Rate	Three-Year Graduation/Transfer Rate	Credentials Awarded per 100 FTE Students
Saint Paul College (MN)	80.0	71.3	61.5	71.7	66.2	52.6	47.0	24.9
North Florida Community College (FL)	62.2	58.3	61.1	65.1	67.4	56.9	56.0	40.7
North Dakota State College of Science (ND)	64.1	47.0	55.7	60.1	52.4	71.4	46.9	60.2
Wisconsin Indianhead Technical College (WI)	62.5	54.3	58.8	59.1	51.7	65.4	50.8	44.4
Lawson State Community College (AL)	65.8	59.4	59.3	59.0	57.0	58.9	49.3	18.2
Missouri State University-West Plains (M)	56.5	58.8	54.0	59.2	57.9	59.2	49.8	40.5
Western Wyoming Community College (WY)	61.8	56.6	56.3	58.7	53.4	49.7	76.6	31.1
Capital Area Technical College (LA)	63.5	55.7	51.9	57.2	64.5	55.7	45.8	28.3
Snow College (UT)	65.2	50.8	52.4	53.7	55.2	54.6	74.3	43.8
North Central Missouri College (MO)	57.1	59.2	53.2	53.7	53.8	60.1	58.2	41.6

# WalletHub 2015 Community College Rankings

1	North Florida Community College (FL)
2	Diné College (AZ)
3	Chipola College (FL)
4	Northwest College (WY)
5	Taft College (CA)
6	Itawamba Community College (MS)
7	Southwestern Community College (NC)
8	Guttman Community College (NY)
9	Patrick Henry Community College (VA)
10	Southwest Virginia Community College (VA)

Community College	'Cost & Financing' Rank	'Classroom Experience' Rank	'Education Outcomes' Rank	'Career Outcomes' Rank
North Florida Community College (FL)	137	7	7	1
Diné College (AZ)	1	25	386	1
Chipola College (FL)	65	76	24	86
Northwest College (WY)	30	96	41	150
Taft College (CA)	4	63	411	1
Itawamba Community College (MS)	72	62	35	228
Southwestern Community College (NC)	184	20	16	476
Guttman Community College (NY)	246	2	451	1
Patrick Henry Community College (VA)	352	47	190	24
Southwest Virginia Community College (VA)	134	144	116	55



# NFCC

## *Glossary of Terms*



# Glossary of Terms

**Academic Year** – The fall, spring, and summer terms of overlapping calendar years. For example, fall 2006, spring 2007, and summer 2007 comprise the 2006-2007 academic year. This differs from the reporting year, which begins with summer and ends with spring.

**Accreditation** – Certification by an official review board that specific requirements have been met. NFCC is accredited by the Southern Association of Colleges and Schools (SACS).

**Adult Basic Education (ABE)** – Education for adults to help them attain basic or functional literacy skills.

**Advanced & Professional (A&P)** – A program area with courses designed to provide the first two years of course work leading to an advanced or professional degree (bachelors, masters, etc.). It includes general education and specialized lower-division courses necessary to transfer into a degree program.

**Associate in Arts (AA)** – A program of instruction that consists of courses offered to freshmen and sophomores. This degree will transfer to the state university system and is awarded when a student completes 60 hours of college credit along with specified performance requirements.

**Associate in Applied Science (AAS)** – A program of instruction with courses to prepare students for entry into employment. These courses are usually not transferrable to a baccalaureate program.

**Associate in Science (AS)** – A program of instruction with courses to prepare students for entry into employment or college transfer. These courses are more likely transferrable to a baccalaureate program than the AAS.

**College Credit** – The type of credit assigned to courses that are part of an organized and specified college degree or program.

**Credit Hour** – The number of contact hours for a course.

**Dual Enrollment** – Enrollment in two institutions at the same time, such as a college and high school, which allows students to earn both high school and college credit simultaneously.

**Duplicated Headcount** – A headcount measure by which students may be counted in more than one category. This measure usually describes the number of seats taken across multiple courses.

**First Time in College (FTIC)** – A student attending college for the first time with no prior credit toward a degree or formal award.

**Full-time Equivalency (FTE)** – A measure to describe various cohorts of students based on the number of student credit hours generated. FTE is computed by dividing the total number of credit or clock hours by 30.

**Full-time Student** – A student who is registered for 12 or more credit hours in the fall and spring semesters or four or more credit hours in the summer semester.

**General Education Development (GED)Test** – A measure designed to provide an opportunity for adults who have not graduated from high school to earn a State of Florida High School diploma by measuring the major academic skills and knowledge associated with a high school program of study.

**Part-time Student** – A student who is registered for less than 12 credit hours in the fall and spring terms or fewer than four credit hours in the summer term.



**Postsecondary Adult Vocational Program (PSAV)** – Job preparatory programs through which a student may receive a vocational certificate upon completion of instruction.

**Postsecondary Vocational (PSV)** – Vocational education for students who have left or completed high school and who are enrolled in an organized program of study for which credit is given toward an associate degree.

**Reporting Year** – The summer, fall, and spring terms of overlapping calendar years. For example, summer 2006, fall 2007, and spring 2007 comprise the 2006-2007 reporting year. This differs from the academic year, which begins with fall and ends with summer.

**Returning Students** – Students enrolled for the current term who were also enrolled in a prior term at the College.

**Unduplicated Headcount** – A headcount measure by which students are counted in only one category.

**Vocational Certificate** – The award for satisfactory completion of a program of study designed to prepare students for entry into an occupation.

**Workforce Education Program** – Training and/or retraining for adults who are out of school and already in the workforce.



# NFCC

*Campus Directory*



# Campus Directory

**General Information: (850) 973-2288 or go to [www.nfcc.edu](http://www.nfcc.edu)**

---

Academic Affairs | (850) 973-1603 | [academicaffairs@nfcc.edu](mailto:academicaffairs@nfcc.edu)

---

Academic Department Chairs 2014-2015

- Social Science, Business, Education, and Computer Science  
Sharon Brave Heart | (850) 973-1619 | [bravehearts@nfcc.edu](mailto:bravehearts@nfcc.edu)
  - Communications, History, Humanities, Art, and Foreign Language  
Jason Welch | (850) 973-9415 | [welchj@nfcc.edu](mailto:welchj@nfcc.edu)
  - Mathematics, Biological and Physical Science  
Dr. Michael Stine | (850) 973-1645 | [stinem@nfcc.edu](mailto:stinem@nfcc.edu)
  - Developmental Education and Student Life Skills  
Efrain Bonilla | (850) 973-1718 | [bonillae@nfcc.edu](mailto:bonillae@nfcc.edu)
- 

Academic Success Center | (850) 973-1719 | [asc@nfcc.edu](mailto:asc@nfcc.edu)

---

Administrative Services | (850) 973-1604 | [adminserv@nfcc.edu](mailto:adminserv@nfcc.edu)

---

Admissions | (850) 973-1622 or 9405 | [admissions@nfcc.edu](mailto:admissions@nfcc.edu)

---

Advising - [advising@nfcc.edu](mailto:advising@nfcc.edu)

- Allied Health | (850) 973-1662 | [bassd@nfcc.edu](mailto:bassd@nfcc.edu)
  - Career and Technical Education | (850) 973-9440 | [dunkled@nfcc.edu](mailto:dunkled@nfcc.edu)
  - College Credit | (850) 973-9455 | [wilkersonp@nfcc.edu](mailto:wilkersonp@nfcc.edu)
  - Developmental Education | (850) 973-9455 | [wilkersonp@nfcc.edu](mailto:wilkersonp@nfcc.edu)
  - Student Support Services | (850) 973-9432 | [studentsupportservices@nfcc.edu](mailto:studentsupportservices@nfcc.edu)
- 

Allied Health | (850) 973-1626 | [alliedhealth@nfcc.edu](mailto:alliedhealth@nfcc.edu)

- Patient Care Technician
  - Practical Nursing
  - Registered Nursing
- 

Alumni Affairs | (850) 973-9423 | [alumni@nfcc.edu](mailto:alumni@nfcc.edu)

---

Artist Series / Children's Theater | (850) 973-1653 | [artistseries@nfcc.edu](mailto:artistseries@nfcc.edu)

---

Audio-Video Support | (850) 973-9456 | [audiovisual@nfcc.edu](mailto:audiovisual@nfcc.edu)

---

Auditorium (Van H. Priest Auditorium lobby) | (850) 973-9408

- Auditorium Rental (Van H. Priest Auditorium) | (850) 973-9443 | [huberts@nfcc.edu](mailto:huberts@nfcc.edu)
- 

Bookstore (Virtual Bookstore) | (850) 973-9437 | [bookstore@nfcc.edu](mailto:bookstore@nfcc.edu)

---

Business Office | (850) 973-1610 or 9438

---

Campus Services (Maintenance) | (850) 973-9445 or 9444 | [maintenance@nfcc.edu](mailto:maintenance@nfcc.edu)

---

---

Career Center | (850) 973-1623 | [careercenter@nfcc.edu](mailto:careercenter@nfcc.edu)

---

College Advancement (PR/Marketing) | (850) 973-1653 | [news@nfcc.edu](mailto:news@nfcc.edu)

---

Community Theatre | (850) 973-9481 | [belld@nfcc.edu](mailto:belld@nfcc.edu)

---

Computer Services, Campus | (850) 973-1672 | [computerservices@nfcc.edu](mailto:computerservices@nfcc.edu)

---

Custodial Services | (850) 973-9421

---

Distance Learning | 973-1603 | [distancelearn@nfcc.edu](mailto:distancelearn@nfcc.edu)

---

Developmental Education Program | (850) 973-1718 | [bonillae@nfcc.edu](mailto:bonillae@nfcc.edu)

---

Dual Enrollment | (850) 973-9450 or 9405 | [dualenrollment@nfcc.edu](mailto:dualenrollment@nfcc.edu)

---

Duplication Center (on campus) | (850) 973-9420 | [duplication@nfcc.edu](mailto:duplication@nfcc.edu)

---

Emergency Medical Services | (850) 973-1673 | [leggetta@nfcc.edu](mailto:leggetta@nfcc.edu)

---

Financial Aid | (850) 973-1621 | [financialaid@nfcc.edu](mailto:financialaid@nfcc.edu)

---

Fitness and Wellness Center | (850) 973-1609 or 973-1639 | [fitnesscenter@nfcc.edu](mailto:fitnesscenter@nfcc.edu)

---

Food Services | (850) 973-9465 | [foodservice@nfcc.edu](mailto:foodservice@nfcc.edu)

---

Foundation (NFCC, Inc.) | (850) 973-9423 | [foundation@nfcc.edu](mailto:foundation@nfcc.edu)

---

Human Resources | (850) 973-9448 | [humanresources@nfcc.edu](mailto:humanresources@nfcc.edu)

---

Learning Resource Center | (850) 973-9411 | [LRC@nfcc.edu](mailto:LRC@nfcc.edu)

---

Library | (850) 973-1624 | [library@nfcc.edu](mailto:library@nfcc.edu)

---

Maintenance | (850) 973-9444 or 9445 | [maintenance@nfcc.edu](mailto:maintenance@nfcc.edu)

---

Medical Administrative Specialist Program | (850) 973-1633 | [lesleint@nfcc.edu](mailto:lesleint@nfcc.edu)

---

Nature Center (Ladell Brothers) | (850) 973-1645 | [stinem@nfcc.edu](mailto:stinem@nfcc.edu)

---

Office of Institutional Effectiveness, Research, and Accreditation | 973-1679 | [taylors@nfcc.edu](mailto:taylors@nfcc.edu)

---

Ombudsman, Student | (850) 973-1619 | [ombud@nfcc.edu](mailto:ombud@nfcc.edu)

---

Patient Care Technician | (850) 973-1662 | [alliedhealth@nfcc.edu](mailto:alliedhealth@nfcc.edu)

---

Personnel | (850) 973-9448 | [humanresources@nfcc.edu](mailto:humanresources@nfcc.edu)

---

Practical Nursing | (850) 973-1662 | [alliedhealth@nfcc.edu](mailto:alliedhealth@nfcc.edu)

---

---

President's Office | (850) 973-1618 or 1601 | [president@nfcc.edu](mailto:president@nfcc.edu)

---

Public Relations/Media | (850) 973-1653 | [news@nfcc.edu](mailto:news@nfcc.edu)

---

Public Safety Academy | (850) 973-1617 | [criminaljustice@nfcc.edu](mailto:criminaljustice@nfcc.edu)

---

Purchasing | (850) 973-1675 | [purchasing@nfcc.edu](mailto:purchasing@nfcc.edu)

---

Recruitment and Student Development | (850) 973-1623 | [recruitment/studentdevelopment@nfcc.edu](mailto:recruitment/studentdevelopment@nfcc.edu)

---

Registered Nursing (A.D.N.) | (850) 973-1662 | [alliedhealth@nfcc.edu](mailto:alliedhealth@nfcc.edu)

---

Registrar | (850) 973-9469 | [registrar@nfcc.edu](mailto:registrar@nfcc.edu)

---

Resource Development | (850) 973-9423 | [foundation@nfcc.edu](mailto:foundation@nfcc.edu)

---

Scholarships (Foundation) | (850) 973-9423 | [foundation@nfcc.edu](mailto:foundation@nfcc.edu)

---

Security Office | (850) 973-0280

---

Sentinel Cafe (Snack Bar) | (850) 973-9496 | [foodservice@nfcc.edu](mailto:foodservice@nfcc.edu)

---

Student Center | (850) 973-9481 | [studentcenter@nfcc.edu](mailto:studentcenter@nfcc.edu)

---

Student Clubs/Organizations | (850) 973-9481 | [studentclubs/organizations@nfcc.edu](mailto:studentclubs/organizations@nfcc.edu)

---

Student Disability Services | (850) 973-1683 | [studentdisabilityservices@nfcc.edu](mailto:studentdisabilityservices@nfcc.edu)

---

Student Support Services | (850) 973-1683 | [studentsupportservices@nfcc.edu](mailto:studentsupportservices@nfcc.edu)

---

Testing Center | (850) 973-9451 | [testing@nfcc.edu](mailto:testing@nfcc.edu)

---

Transcripts/Records | (850) 973-1612 | [transcripts@nfcc.edu](mailto:transcripts@nfcc.edu)

---

TTY Phone Access | (850) 973-1611

---

Veteran Affairs | (850) 973-1622 | [veteranaffairs@nfcc.edu](mailto:veteranaffairs@nfcc.edu)

---

Vocational Programs | (850) 973-9455 | [vocationalprograms@nfcc.edu](mailto:vocationalprograms@nfcc.edu)

---

Webmaster (www.nfcc.edu) | (850) 973-9424 | [webmaster@nfcc.edu](mailto:webmaster@nfcc.edu)

# Campus Map



## NORTH FLORIDA COMMUNITY COLLEGE CAMPUS MAP

- |   |  |   |
|---|--|---|
| 1. Van H. Priest Auditorium                                 | 9. Student Center                      | 18. Warehouse                                 |
| 2. Administrative Services Building                         | 10. Fine Arts Building/Faculty Offices | 19. Sentinel Baseball Field                   |
| 3. Walter L. Bishop Administration Building                 | 11. Hardee Center for the Arts         | 20. Frank Cantey Softball Field               |
| 4. Marshall Hamilton Library                                | 12. Colin P. Kelly Fitness Center      | 23. Ladell Brothers Environmental Center      |
| 5. Technology Center  | 13. Career and Technical Center        | 32. College Advancement/Artist Series         |
| 6. College Preparatory Education/<br>Mathematics Classrooms | 14. Warehouse                          | 33. University Programs/Saint Leo Office      |
| 7. Business Education Building                              | 15. Greenhouse                         | 34. Morris G. Steen Jr. Science Learning Cntr |
| 8. General Classrooms/Faculty Offices                       | 16. Testing Center                     | 35. Public Safety Academy                     |
|   | 17. Maintenance Building               | 36. Government Relations Office               |